

DELHI TRANSCO LTD.

STATE LOAD DISPATCH CENTER

PROGRESS REPORT

NOVEMBER 2017

S. No.	CONTENTS	Page No.
1.	Salient Features of Delhi Power System	3
2.	Performance of Generating Stations within Delhi	4
3.	Details of Outage of Generating Stations within Delhi	5-18
4.	Allocation of Power to Delhi from unallocated quota of central sector	19
5.	Allocation of Power to Discoms	20
6.	Power Availability Demand Position of Delhi at the time of occurrence of Peak Demand	21
7.	Power Availability Demand Position of Delhi at the time of occurrence of Maximum Un-Restricted Demand	22
8.	Source wise scheduled drawl from grid and Availability within Delhi	23-26
9.	Shedding Details	27-31
10.	Load Curve for the Day of Peak Demand	32
11.	Load Curve for the day of occurrence of Maximum Un-Restricted Demand	33
12.	Load Curve for the day of Maximum Energy Consumed	34
13.	Load Curve for the day of Maximum Un-Restricted Energy Demand	35
14.	Load Duration Curve	36
15.	Frequency Analysis	37
16.	Voltage Profile for significant 220kV Sub-Stations	38
17.	Voltage Profile for significant 400kV Sub-Stations	39-40
18.	Details of Capacitors Installations in Delhi	41-46
19.	Tripping Details of 400/220 KV System in Delhi Power System	47-48
20.	Details of Under frequency Relay operations in Delhi Power System	49

1 **SALIENT FEATURES OF DELHI POWER SYSTEM**

Sr. No.	Features	NOV. 2016	NOV. 2017
1	Effective Generation Capacity within Delhi in MW		
	Rajghat Power House	135	135
	Gas Turbine	270	270
	Pragati Power Corporation Ltd.	330	330
	Badapur Thermal Power Station	705	705
	Rithala GT	108	108
	Bawana	1372	1372
	TOWMCL	16	16
	Total	2936	2936
2	Maximum Unrestricted Demand (MW)	3510	3695
	Date	03.11.2016	01.11.2017
	Time	18.17.33	18.22.59
3	Peak Demand met (MW)	3510	3695
	Date	03.11.2016	01.11.2017
	Time	18.17.33	18.22.59
4	Peak Availability (MW)	3317	3588
5	Shortage (-) / Surplus (+) in MW	(+) 134	(-) 107
6	Percentage Shortage (-) / Surplus (+)	(+) 3.93	(-) 2.90
7	Maximum Energy Consume in a day (Mus)	68.896	71.967
8	Energy Consumed during the month	1746.386	1896.704
9	Load Shedding in Mus		
A)	Due to Grid Restrictions		
i)	Under Frequency Relay Operations	0.000	0.000
ii)	Manual Load shedding from DTL S/Stns.	0.000	0.000
iii)	Load Shedding due to low frequency / Low Voltage / TTC/ATC Violation		
	NDPL	0.020	0.008
	BRPL	0.164	0.000
	BYPL	0.000	0.000
	NDMC	0.000	0.000
	MES	0.000	0.000
iv)	Due to transmission Constraints in Central Sector	0.000	0.000
	Total due to Grid Restriction	0.184	0.008
B)	Due to Constraints in System in Mus		
	DTL	0.421	0.144
	NDPL	0.193	0.025
	BRPL	0.148	0.035
	BYPL	0.034	0.346
	NDMC	0.000	0.000
	MES	0.000	0.000
	Other Agencies	0.082	0.002
	Total	0.878	0.552
11	Grand Total in Mus	1.062	0.560

2. PERFORMANCE OF GENERATING STATIONS WITHIN DELHI DURING NOVEMBER 2017

A) For the month of November 2017

All Figures in MUs

S. No	Stations	Gross Generation	Aux. Consumption	Net Generation	Availability (%)	Backing Down
1.	RPH	0.000	0.193	-0.193	0.00	0.00
2.	GT	52.107	1.653	50.454	87.14	113.926
3.	PPCL	189.249	4.146	185.103	93.70	31.961
4.	BTPS	0.000	2.393	-2.393	0.00	0.00
5.	Rithala	0.000	0.060	-0.060	89.17	59.04
6.	Bawana	208.782	7.198	201.584	50.02	277.302
7.	Towmcl	13.740	1.909	11.831	--	--
8.	EDWPCL	2.103	0.779	1.324	--	--
9.	DMSWL	9.022	1.868	7.154	--	--
	TOTAL	475.003	20.199	454.804	--	482.229

B) For the Year 2017-18 (Upto November 2017)

Power Station	Effective Capacity (MW)	Net Generation in MUs for Nov 2017	Availability (%) for Nov. 2017	PLF (%) for Nov. 2017	Cumulative Generation in MUs upto Nov. 2017 for the year 2017-18	Cumulative Availability in % upto Nov. 2017 for the year 2017-18	Cumulative PLF in % upto Nov. 2017 for the year 2017-18
RPH	135	-0.193	0.00	0.000	0.000	0.00	-0.07
GT	270	50.454	87.14	26.72	427.298	81.12	26.70
PPCL	330	185.103	93.70	79.83	1274.795	97.29	66.24
BTPS	705	-2.393	0.00	0.00	1225.566	48.09	38.14
Rithala	108	-0.060	89.17	0.00	0.000	89.17	0.00
Bawana	1372	201.584	50.02	20.95	2007.658	71.34	25.04
Towmcl	16	11.831	--	--	110.224	--	--
EDWPCL	--	1.324	--	--	15.944	--	--
DMSWL	--	7.154	--	--	77.983	--	--
TOTAL	2936	454.804	--	--	5139.468	--	--

3 DETAILS OF OUTAGES OF GENERATING STNS. WITHIN DELHI W.E.F. APRIL 2017

RPH

Unit No	Capacity in MW	Outage		Synchronization		Reason of Outage
		Date	Time	Date	Time	
1	67.5	08.05.15	13.40	Contd.		Not in operation due to not meeting pollution norms.

Unit No	Capacity in MW	Outage		Synchronization		Reason of Outage
		Date	Time	Date	Time	
2	67.5	21.05.15	10.20	Contd.		Not in operation due to not meeting pollution norms.

(B) Gas Turbine

Unit No	Capacity in MW	Outage		Synchronization		Reason of Outage
		Date	Time	Date	Time	
1	30	30.4.17	07:00	30.4.17	19:15	Machine stopped to attend Lealakge of Cooling water from CW return line.
		30.4.17	19:15	2.5.17	12:02	After attending the cooling water leakage machine could not be taken on bar due no schedule from SLDC on CC NG.
		2.5.17	23:35	24.5.17	06:57	Machine stopped due to no schedule from SLDC on CC NG
		4.6.17	15:47	4.6.17	17:16	machine tripped with following alarm GAC Electrical protection Trouable , Electrical Trouable Normal shut down and Genarator Exciatation field failure alarm. Processor of DVR found faulty and same was replaced
		7.6.17	09:45	14.6.17	12:51	Machine could not be taken on bar due to no schedule from SLDC on CC NG
		20.6.17	17:26	20.6.17	23:59	Machine tripped on Electrical Trouble Normal shut down and generator electrical protection. The following alarm also appeared on protection panel. Relay P141B operated, Rotor or stator earth fault and 11 KV Bkr gas pressure low.
		23.6.17	23:02	24.6.17	14:05	Machine Stopped due to Low SF-6 Gas Pressure in 11 KV Breaker.
		24.6.17	14:40	26.6.17	19:40	Machine could not be taken on bar due to no schedule from SLDC on CC NG
		2.7.17	09:47	3.7.17	17:14	Stopped due to low demand and high frequency
		13.7.17	18:16	18.7.17	20:22	
		22.7.17	12:16	11.8.17	15:37	Machine stopped due to fire observed in load gear box.
		11.8.17	18:24	11.8.17	21:25	
		12.8.17	00:05	7.9.17	12:00	Stopped due to low demand and high frequency.
		18.9.17	07:55	18.9.17	18:11	
		22.9.17	11:50	22.9.17	14:30	Machine tripped on TAD High(155 mm WC)
		22.9.17	14:30	23.9.17	08:15	Stopped due to low demand and high frequency
		23.9.17	08:15	23.9.17	12:15	Machine not available due to problem in NRV of ACW line.
		23.9.17	12:15	28.9.17	14:58	Stopped due to low demand and high frequency
		4.10.17	14:17	4.10.17	16:45	Machine tripped on LTTH high. There was a problem in cooling water circuit as the LTTH of other machines were also running High.The self cleaning filter of ACW system cleaned circulating water sytem got normalized.
		4.10.17	16:45	6.10.17	10:15	Stopped due to low demand and high frequency.
7.10.17	12:32	8.10.17	12:12			
10.10.17	06:10	10.10.17	09:30			
10.10.17	16:00	12.10.17	08:42			
15.10.17	00:03	17.10.17	09:02			
18.10.17	15:15	28.10.17	09:47			
30.10.17	05:00	30.10.17	08:00	Machine stopped on TAD High as the machine could not sustain on 5 MW load.		
30.10.17	08:00	4.11.17	10:25	Stopped due to low demand and high frequency..		
18.11.17	20:05	30.11.17	23:59	Machine stopped to changeover to GT-5 and also intimated to SLDC		

Unit No	Capacity in MW	Outage		Synchronization		Reason of Outage
		Date	Time	Date	Time	
2	30	4.4.17	00:04	20.4.17	16:50	Machine stopped due to low demand on CCNG from SLDC
		30.4.17	07:00	30.4.17	19:15	Machine stopped to attend Lealakge of Cooloing water from CW return line.
		30.4.17	19:15	24.5.17	10:20	After attending the cooling water leakage machine could not be taken on bar due no schedule from SLDC.
		29.5.17	06:12	29.5.17	09:45	Machine tripped while rebooting the Mark-IV system as the machine was operating while R&S controller was inoperative.
		29.5.17	09:45	02.06.17	09:15	Machine cleared from C&I side but SLDC did not allow to un the machine due to low demand in the Grid.
		2.6.17	09:15	2.6.17	20:13	machine could not be taken on bar as mark-IV system was found hanged. Card "HCMA" in <C> communicator and "HXPD" in <R> Controller was found faulty. These cards were replaced. After executing start command Machine came in temperature control mode and speed of machine did not increase after 2850 RPM.
		7.6.17	09:45	13.6.17	14:12	Machine could not be taken on bar due to no schedule from SLDC on CC NG
		13.6.17	14:26	14.6.17	12:27	Machine taken on bar for testing.
		2.7.17	09:47	3.7.17	17:52	Stopped due to low demand and high frequency
		8.7.17	15:25	9.7.17	16:34	Tripped on loss of field on alarm Electrical trouble shutdown.
		10.7.17	10:26	10.7.17	16:45	Tripped on loss of field on alarm Electrical trouble shutdown.
		11.7.17	09:57	11.7.17	17:04	Machine tripped on Electrical Trouble Normal Shut Down and loss of field alarm on protection panel.
		11.7.17	17:10	13.7.17	10:43	Stopped due to low demand and high frequency
		13.7.17	12:35	14.7.17	13:50	Machine tripped on Electrical Trouble Normal Shut Down and loss of field alarm on protection panel.
		14.7.17	13:55	18.7.17	18:29	Stopped due to low demand and high frequency
		18.7.17	20:45	20.7.17	17:50	
		22.7.17	18:59	10.8.17	15:38	
		12.8.17	00:07	7.9.17	14:38	
		18.9.17	07:50	18.9.17	17:46	
		23.9.17	08:15	23.9.17	12:15	Machine stpped to attend NRV in return line ACW line.
		23.9.17	12:15	25.9.17	12:49	Stopped due to low demand and high frequency
		25.9.17	16:10	28.9.17	14:38	
		4.10.17	15:45	6.10.17	09:52	
		7.10.17	12:32	7.10.17	14:24	
1.11.17	13:32	8.11.17	10:00			
18.11.17	19:58	30.11.17	23:59	Machine stopped to changeover to GT-6 and also intimated to SLDC		

Unit No	Capacity in MW	Outage		Synchronization		Reason of Outage
		Date	Time	Date	Time	
3	30	4.4.17	23:58	30.4.17	07:00	Machine stopped due to low demand on CC Spot R-LNG from SLDC
		30.4.17	07:00	30.4.17	19:15	machine was not available due to non availability of cooling water as there was leakage from CW return line for which plant shut down was taken.
		30.4.17	19:15	29.7.17	14:53	Machine could not taken on load due to no schedule from SLDC on CC Spot R-LNG
		29.7.17	15:04	04.8.17	17:10	Machine stopped after taking trial test as there was no schedule from SLDC.
		4.8.17	22:32	5.8.17	16:42	Stopped due to low demand and high frequency
		6.8.17	02:15	7.9.17	11:32	
		7.9.17	15:35	14.9.17	05:36	
		16.9.17	13:22	19.9.17	11:17	
		21.9.17	14:08	21.9.17	16:27	Machine tripped, No alarm appeared but fuel failure alarm came on protection pannel. The Cooling water for Turbine oil cleaning was very dirty and this water was drained after that fresh DM water taken into tank and Machine synchronised.
		22.9.17	12:30	22.9.17	14:30	Machine tripped on TAD High
		22.9.17	14:30	23.9.17	08:15	Stopped due to low demand and high frequency
		23.9.17	08:15	23.9.17	12:11	Machine not available due to problem in NRV of ACW line.
		28.9.17	01:00	29.9.17	08:26	Stopped due to low demand and high frequency
		29.9.17	09:04	4.10.17	09:50	Machine stopped as GT-5 was taken on load as per SLDC requirement of load.
		7.10.17	01:00	8.10.17	08:20	Stopped due to low demand and high frequency
		8.10.17	16:30	9.10.17	12:30	
		9.10.17	20:00	14.10.17	12:25	
		15.10.17	00:06	17.10.17	09:40	
		17.10.17	19:01	1.11.17	05:10	Machine stopped as per SLDC message due to low demand on CCNG.
		1.11.17	13:35	8.11.17	10:06	
9.11.17	00:22	9.11.17	09:00	Machine tripped on high TAD .		
9.11.17	09:00	30.11.17	23:59	Machine cleared from Maintenance side but not taken on load due to low schedule on CCNG.		

Unit No	Capacity in MW	Outage		Synchronization		Reason of Outage
		Date	Time	Date	Time	
4	30	4.4.17	23:58	30.4.17	07:00	Machine stopped due to low demand on CC Spot R-LNG from SLDC
		30.4.17	07:00	30.4.17	19:15	machine not available due to non availability of cooling water as there was leakage from CW return line for which plant shut down was taken.
		30.4.17	19:15	02.06.17	12:25	Machine stopped due to no schedule from SLDC on CC Spot R-LNG
		2.6.17	12:30	5.6.17	13:30	Stopped due to low demand and high frequency
		5.6.17	13:30	5.6.17	15:50	After giving start command to machine it came on FSNL in due time. While trying to synchronise its 11 KV breaker not taking Close command inspite all permissive healthy. After checking DVR and Mark-Vie system it was found that closing permissive from protection panel was not available. The problem rectified by Protection department and same was synchronised with Grid.
		6.6.17	22:13	14.9.17	09:28	Machine stopped due to low schedule from SLDC on CC Spot
		17.9.17	15:30	19.9.17	12:43	With heavy jerk in the system and inspecting at local its Y Phase Bus Conductor got snapped and oil is coming from the Bushes of R&Y Phase.
		20.9.17	00:05	23.9.17	08:15	Machine stopped as per SLDC message due to low demand on CCspot.
		23.9.17	08:15	23.9.17	12:15	Machine not available due to problem in NRV of ACW line.
		23.9.17	12:15	25.9.17	15:38	Stopped due to low demand and high frequency
		27.9.17	17:31	27.9.17	19:40	Machine tripped on Electrical Trouble Normal Shut down.
		27.9.17	19:45	13.10.17	11:20	Stopped due to low demand and high frequency
		4.10.17	22:48	5.10.17	01:28	Machine tripped due to communication failed with any IO pack. Loss of flame Tripp alarm appeared.
		5.10.17	01:40	5.10.17	10:48	Stopped due to low demand and high frequency
		7.10.17	01:00	8.10.17	12:00	
		8.10.17	12:00	8.10.17	18:30	Machine taken out from DC due to problem in Field breaker.
		8.10.17	18:35	9.10.17	13:18	Machine cleared from maintenance side but not taken on load due low schedule from SLDC.
		9.10.17	20:00	14.10.17	12:28	Stopped due to low demand and high frequency
		14.10.17	17:20	17.10.17	10:13	
		17.10.17	11:01	17.10.17	13:13	Machine tripped due to communication failed with any IO pack.
17.10.17	19:01	31.10.17	23:59	Stopped due to low demand and high frequency.		
1.11.17	00:00	9.11.17	02:04			
9.11.17	02:23	30.11.17	23:59			

Unit No	Capacity in MW	Outage		Synchronization		Reason of Outage
		Date	Time	Date	Time	
5	30	4.4.17	00:00	25.4.17	18:57	machine taken to Hot Gas Path Inspection & Generator O/h since 25/03/2017
		25.4.17	19:57	30.4.17	07:00	Machine Cleared after synchronizing and running for one hour on 10 MW, 20MW and 30 MW
		30.4.17	07:00	30.4.17	19:15	machine was not available due to non availability of cooling water as there was leakage from CW return line for which plant shut down was taken.
		30.4.17	19:15	1.5.17	07:22	Machine could not taken on load due to no schedule from SLDC on CC Spot R-LNG
		16.5.17	12:40	16.5.17	13:46	Machine tripped on loss of Excitation alongwith Electrical trouble normal shut down alarm on protection panel.
		24.5.17	11:25	05.06.17	17:50	Machine stopped due to no schedule from SLDC on CC NG
		16.6.17	03:46	13.07.17	13:21	Stopped due to low demand and high frequency
		13.7.17	14:41	13.7.17	17:15	Machine tripped on Exhaust over temperature trip alarm.
		14.7.17	18:57	15.7.17	12:25	Tripped on electrical normal shutdown.UAT E/F operated, differential trip, differential R, Differential Y and Overall differential operated
		15.7.17	12:51	15.7.17	16:39	Machine stopped after taking trial and no schedule from SLDC.
		15.7.17	17:22	18.7.17	11:08	Stopped due to low demand and high frequency
		18.7.17	18:50	20.7.17	11:06	Machine stopped due to leakage of water from Warren Pump and less load on machine.
		20.7.17	13:37	22.7.17	18:45	Machine stopped after taking trial and no schedule from SLDC.
		28.7.17	10:42	29.7.17	15:25	Machine tripped on overspeed bolt trip alarm.Over speed bolt trip alarm reset and not taken on bar due to no schedule from SLDC.
		29.7.17	15:34	02.08.17	11:40	Machine stopped after taking trial and no schedule from SLDC.
		5.8.17	20:08	11.8.17	13:45	Stopped due to low demand and high frequency
		22.8.17	18:00	22.8.17	21:03	Machine stopped due to gas pressure low in 11 KV breaker
		26.8.17	12:00	26.8.17	19:50	Stopped due to low demand and high frequency.
		30.8.17	18:33	30.8.17	21:30	Machine stopped due to SF6 Gas pressure low alarm in 11 KV breakers.
		30.8.17	21:30	5.9.17	09:30	Stopped due to low demand and high frequency.
		7.9.17	10:05	7.9.17	10:54	Machine desynchronise to change the relay which got damaged and not permitting increase in load.
		17.9.17	15:30	17.9.17	17:20	With heavy jerk observed in the system GT#5 tripped.
		20.9.17	18:05	23.9.17	08:15	Stopped due to low demand and high frequency..
		23.9.17	08:15	23.9.17	13:59	Machine not available due to problem in NRV of ACW line.
		25.9.17	16:49	29.9.17	09:00	Machine Tripped due to lub oil temp high alarm. After that machine not taken on load due to no demand on OC spot.
		29.9.17	21:12	29.9.17	22:12	Machine tripped on Exhaust temp v.High
		29.9.17	22:52	2.10.17	12:30	Stopped due to low demand and high frequency.
		2.10.17	14:00	3.10.17	22:48	Stopped due to low demand and high frequency..
		4.10.17	02:42	4.10.17	12:42	Machine tripped on high exhaust over temperature.
		4.10.17	14:10	4.10.17	15:15	Machine tripped on LTTH high. There was a problem in cooling water circuit as the LTTH of other machines were also running High.The self cleaning filter of ACW system cleaned circulating water sytem got normalized.
		4.10.17	15:15	5.10.17	09:55	Machine cleared from maintenance side but not taken on load due low schedule from SLDC.
		12.10.17	08:14	14.10.17	11:24	Machine tripped due to Exhaust Temp of Very High cleared by maintenance division but not taken on load due to low schedule from SLDC.
14.10.17	14:32	14.10.17	16:27	Machine tripped on high exhaust temperature.		
14.10.17	17:15	17.10.17	08:57	Stopped due to low demand and high frequency.		
17.10.17	23:01	3.11.17	05:21			
1.11.17	14:16	2.11.17	11:25			
2.11.17	19:35	18.11.17	16:50	Machine changeover to GT-5 and also intimated to SLDC		

Unit No	Capacity in MW	Outage		Synchronization		Reason of Outage
		Date	Time	Date	Time	
6	30	23.03.17	14:17	30.4.17	07:00	Machine stopped due to low schedule from SLDC on CC spot R-LNG.
		30.4.17	07:00	30.4.17	19:15	machine was not available due to non availability of cooling water as there was leakage from CW return line for which plant shut down was taken.
		30.4.17	19:15	2.5.17	12:45	Machine could not taken on load due to no schedule from SLDC on CC Spot R-LNG
		2.5.17	12:45	2.5.17	22:25	After getting schedule from SLDC, Machine could not be taken on load due to early disengaging of Diesel Engine before 65% of Turbine full rpm.
		7.5.17	00:23	7.5.17	00:47	Machine taken on FSNL to change over from Bus bar BB-1 to BB-3
		22.5.17	15:00	06.06.17	21:21	Machine stopped due to no schedule from SLDC on CC NG
		16.6.17	03:49	13.07.17	15:20	Machine could not be taken on bar due to no schedule from SLDC on CC NG
		20.7.17	20:18	22.7.17	12:12	Stopped due to low demand and high frequency
		27.7.17	02:44	27.7.17	15:35	(i) Communication failed with IO pack
		27.7.17	15:40	28.7.17	11:38	Stopped due to low demand and high frequency
		2.8.17	13:08	6.8.17	02:06	Machine stopped as per SLDC message due to low demand on CCNG.
		10.8.17	13:18	10.8.17	13:29	Machine came on FSNL due to disturbance in Pragati 220 KV I.P Ext Grid.
		26.8.17	03:13	26.8.17	22:22	Stopped due to low demand and high frequency.
		26.8.17	22:53	30.8.17	17:50	
		16.9.17	13:18	17.9.17	17:23	
		22.9.17	10:08	22.9.17	18:00	Machine tripped on TAD High(142 mm WC)
		22.9.17	18:00	23.9.17	08:15	Stopped due to low demand and high frequency
		23.9.17	08:15	23.9.17	12:15	Machine not available due to problem in NRV of ACW line.
		23.9.17	12:15	25.9.17	12:55	Stopped due to low demand and high frequency
		25.9.17	19:02	29.9.17	08:00	
		30.9.17	21:00	13.10.17	22:42	
		7.10.17	18:00	8.10.17	13:08	
		11.10.17	06:10	11.10.17	10:11	
11.10.17	16:00	14.10.17	11:50			
17.10.17	23:01	1.11.17	05:52			
4.11.17	10:30	18.11.17	19:07	Machine changeover to GT-6 and also intimated to SLDC		

Unit No	Capacity in MW	Outage		Synchronization		Reason of Outage
		Date	Time	Date	Time	
STG -1	30	30.4.17	07:00	30.4.17	19:15	Machine stopped to attend Lealakge of Cooling water from CW return line.
		30.4.17	19:15	2.5.17	15:56	Machine could not taken on load due to no schedule from SLDC on CC Spot R-LNG
		2.5.17	23:35	24.5.17	09:40	Stopped due to low demand and high frequency
		7.6.17	09:45	14.6.17	16:58	
		2.7.17	09:47	3.7.17	17:14	Stopped due to low demand and high frequency
		8.7.17	15:25	8.7.17	17:07	Machine tripped as one of the running machine ,GT#2 tripped on loss of excitation.
		13.7.17	18:16	19.7.17	07:20	Stopped due to low demand and high frequency
		22.7.17	18:55	11.8.17	17:35	
		11.8.17	18:47	11.8.17	19:52	machine tripped on drum level very high alarm due drum level contrnol valve of both circuit of HRSG# 2 not operative.
		12.8.17	00:07	16.8.17	12:45	Stopped due to low demand and high frequency.
		16.8.17	12:45	28.8.17	18:30	STG-1 taken out of DC due to condenser cleaning
		28.8.17	18:30	7.9.17	16:14	Stopped due to low demand and high frequency
		18.9.17	07:10	18.9.17	22:17	Machine stopped due to heavy leakage of DM water from NRV of CPH O/L valve of HRSG#2.
		19.9.17	12:30	19.9.17	13:40	Machine tripped on high Exhaust steam Pr. High. Though all the parameters were normal all of sudden Exhaust steam pressure became high with in the span of 2-3 seconds.
		23.9.17	08:15	23.9.17	12:15	Machine stopped to attend NRV of ACW Return line.
		23.9.17	12:15	27.9.17	17:05	Stopped due to low demand and high frequency
		4.10.17	14:17	4.10.17	16:45	Machine tripped alongwith tripping of GT#1 .
		4.10.17	16:45	6.10.17	12:24	Machine cleared from maintenance side but not taken on load due low schedule from SLDC.
		7.10.17	05:30	7.10.17	08:16	Running BFP tripped on De-aerator level very low as this alarm appeared due to burning of control cable near super heater zone area of drum floor. Also Stand by BFP could not be taken as the start permissive not available.Hence Machine tripped manually.
		7.10.17	12:32	8.10.17	07:00	Machine stopped to attend flue gas leakages at super heater zone area of boiler floor.
		8.10.17	07:00	8.10.17	13:34	Machine cleared from maintenance side but not taken on load due low schedule from SLDC.
		8.10.17	14:26	8.10.17	15:40	Machine tripped due to false alarm of turbine overspeed as all the parameter were running normal.
		25.10.17	06:20	25.10.17	09:09	Machine tripped on failure of LT supply to Boiler and turbine MCC board due to tripping of 800 KVA Transformer-I.Buchholtz relay of 800 KVA Transformer-I operated. On further inspection it was found that the oil level indicator was showing the level of oil as above normal but in actual it was below low level.
28.10.17	08:10	28.10.17	08:32	Machine tripped on low vacume as MS-13 valve closed suddenly.		
1.11.17	13:32	4.11.17	12:28	Machine stopped as per SLDC message due to low demand on CCNG.		
5.11.17	22:57	5.11.17	23:29	Machine tripped on CH-1 & CH-II operated		
8.11.17	16:02	8.11.17	17:45	Machine tripped due to malfunctioning of speed pick up.		
18.11.17	18:47	30.11.17	23:59	Machine stopped due to changeover to STG-III as intimated also to SLDC		

Unit No	Capacity in MW	Outage		Synchronization		Reason of Outage
		Date	Time	Date	Time	
STG -2	30	1.4.17	11:39	1.4.17	19:25	Machine stopped to attend hot spot on R-Phase Line Isolator.
		4.4.17	00:00	30.4.17	07:00	Machine stopped due to low demand on CCNG from SLDC
		30.4.17	07:00	30.4.17	19:15	machine was not available due to non availability of cooling water as there was leakage from CW return line for which plant shut down was taken.
		30.4.17	19:15	05.06.17	23.02	Machine could not taken on load due to no schedule from SLDC on CC Spot R-LNG
		6.6.17	22:13	4.8.17	20:32	machine stopped as there was no schedule on CC SPOT.
		4.8.17	20:35	4.8.17	22:05	All of sudden load became zero and machine tripped manually.
		4.8.17	22:20	5.8.17	18:50	machine stopped as local operator informed about heavy steam leakage from MS-114 Valve.
		5.8.17	20:26	10.8.17	15:00	Suddenly machine tripped on multiple alarm on BCD. Alarm s like ESV closed and both boiler trip.
		10.8.17	15:00	26.8.17	03:00	After clearance from C&I machine is available but not taken on load due to low schedule from SLDC.
		26.8.17	03:00	26.8.17	16:45	Machine not available due to work in CW Inlet valve of STG#I.
		26.8.17	16:45	31.8.17	23:59	Machine is available but no schedule from SLDC on CCNG.
		14.9.17	16:07	14.9.17	17:34	machine tripped due to Hot well Level very high. As The running CEP-2A left the load due to choking of suction stainer and stand by CEP-28 was under PTW.
		17.9.17	15:30	19.9.17	13:09	machine tripped due to tripping of GT#4 as the machine was running on single GT.
		21.9.17	14:08	21.9.17	17:42	machine tripped due to tripping of GT#3 as the machine was running on single GT.
		22.9.17	12:30	22.9.17	14:30	machine tripped due to tripping of GT#3 as the machine was running on single GT.
		22.9.17	14:30	23.9.17	08:15	Stopped due to low demand and high frequency
		23.9.17	08:15	23.9.17	14:00	Machine not available due to problem in NRV of ACW line.
		28.9.17	01:00	4.10.17	11:45	Stopped due to low demand and high frequency
		7.10.17	01:00	7.10.17	18:15	Machine stopped as per SLDC message due to low demand on CCNG.
		7.10.17	18:15	8.10.17	07:00	Machine was taken out from DC to attend leakage of cooling water at ACW inlet line of STG#III.
		8.10.17	07:00	8.10.17	12:00	Machine cleared from maintenance side but not taken on load due low schedule from SLDC.
		8.10.17	16:30	9.10.17	14:48	Stopped due to low demand and high frequency
		9.10.17	20:00	14.10.17	15:00	
		15.10.17	00:06	17.10.17	11:14	
		17.10.17	19:01	1.11.17	07:52	
		1.11.17	13:35	8.11.17	11:58	
		9.11.17	00:22	9.11.17	09:00	Machine tripped due to tripping of GT#3 as machine running on single HRSG#3.
		9.11.17	09:00	30.11.17	23:59	Stopped due to low demand and high frequency

Unit No	Capacity in MW	Outage		Synchronization		Reason of Outage
		Date	Time	Date	Time	
STG -3	30	28.3.17	18:45	24.4.17	18:00	Machine taken for Chemical Cleaning of Condensor
		24.4.17	18:00	30.4.17	07:00	Chemical Cleaning of Condensor completed but machine did not taken on load due to no schedule on CC Spot R-Lng from SLDC
		30.4.17	07:00	30.4.17	19:15	machine was not available due to non availability of cooling water as there was leakage from CW return line for which plant shut down was taken.
		30.4.17	19:15	1.5.15	11:22	Machine could not taken on load due to no schedule from SLDC on CC Spot R-LNG
		7.5.17	08:30	7.5.17	10:47	There was hunting in 24 Volt Charger Out put Voltage which leads to tripping of MCB of DDC panel CRB01,CRB02, CRC01,CRC03 & CJJ02. Due to this Operating parameters were not available at BCD as well as on CRT and subsequently machine tripped on Turbine Ch-I & Ch-II.
		24.5.17	11:25	01.06.17	13:15	Machine stopped as there was no schedule on CCNG
		1.6.17	13:00	5.6.17	13:15	Machine taken under PTW to attend leakage of steam from Main Steam Turbine Control valve.
		5.6.17	13:15	5.6.17	19:55	As per SLDC msg Machine taken on Bar.
		5.6.17	20:26	5.6.17	21:16	Machine tripped on Turbine RJB Vibration V.High
		11.6.17	12:37	11.6.17	14:59	Machine tripped on Turbine channel-1 & 2 operated.
		15.6.17	11:39	15.6.17	12:52	Machine tripped on Turbine channel-1 & 2 operated.
		16.6.17	03:49	13.07.17	17:22	Machine could not be taken on bar due to no schedule from SLDC on CC NG
		20.7.17	20:18	22.7.17	14:03	Stopped due to low demand and high frequency
		27.7.17	02:44	27.7.17	05:52	Machine tripped on Very High Drum level as the Drum level of HRSG# 5 could not be controlled . The other HRSG was tripped due to tripping of GT#6.
		28.7.17	10:42	28.7.17	12:42	Machine tripped as running Machine GT # 5 tripped on overspeed bolt alarm.
		28.7.17	19:18	28.7.17	20:06	Machine Tripped on Drum Level High
		28.7.17	20:54	28.7.17	22:21	Machine Tripped on Class A Trip relay operated
		5.8.17	20:08	6.8.17	04:00	Stopped due to low demand and high frequency.
		10.8.17	13:18	10.8.17	14:18	Machine tripped due to disturbance in Pragati 220 KV I.P Ext Grid.
		17.8.17	23:28	18.8.17	03:38	Machine tripped on exhaust pressure very high. Vaccum stars decreasing slowly and machine tripped when the value og vaccum was -0.78 Kg/Cm2. Both high and very high alarm appeared same time.
		20.8.17	07:10	20.8.17	11:10	Machine tripped due to Turbine Ch-1 & Ch-2 operated, Diff. expansion V.High and V.high, Turbine Brg. Temp and Generator bearing temp v.high alarm also appeared on BCD pannel. It was found that BK card failed and same was replaced.
		26.8.17	03:11	26.8.17	21:15	Machine stopped to attend CW Inlet Valve of STG #I.
		16.9.17	02:18	16.9.17	13:04	Machine stopped as the Generator winding tempertaure of Machine became high due to problem in cooling water.
		17.9.17	15:30	17.9.17	19:51	Machine tripped as there was disturbance in the yard due to snapping of Y phase bus conductor of GT#4.
		18.9.17	18:49	18.9.17	19:38	machine tripped with Turbine Ch-I & II operated.
		20.9.17	17:30	20.9.17	21:06	Machine stopped as the Generator winding tempertaure of Machine became high due to problem in cooling water.It is suspected that the seat of NRV of O/L valve in ACW line is in stucked position..
		22.9.17	10:08	22.9.17	18:00	Machine tripped on due to tripping of GT#6 on high TAD as the machine was running on single boiler.
		22.9.17	18:00	23.9.17	08:15	Stopped due to low demand and high frequency
		23.9.17	08:15	23.9.17	12:15	Machine not available due to problem in NRV of ACW line.
		23.9.17	12:15	23.9.17	16:13	Stopped due to low demand and high frequency
		25.9.17	18:10	27.9.17	23:30	Machine stopped due to lube oil temp very high (75 to 80 degree C).
		27.9.17	23:30	28.9.17	23:59	Stopped due to low demand and high frequency
		30.9.17	21:00	4.10.17	01:14	
		7.10.17	17:30	8.10.17	09:55	Machine stopped due to heavy leakage from ACW inlet line of STG# III.
		10.10.17	02:25	10.10.17	03:40	Machine tripped on Drum level low.
		12.10.17	08:14	14.10.17	13:05	Machine tripped due to tipping of GT#5 as the machine was running on single GT.but not taken on load due to low schedule from SLDC.
		17.10.17	23:01	1.11.17	08:52	Stopped due to low demand and high frequency
		2.11.17	19:30	2.11.17	20:58	Machine tripped due to hotwell level high
		4.11.17	07:45	18.11.17	19:28	Machine changedover to STG-III as also intimated to SLDC
		23.11.17	08:54	23.11.17	09:47	Machine tripped due to tripping of CEP-3B and CEP-3A could not start. Machine thus tripped on low vacuum.

(C) PRAGATI

Unit No	Capacity in MW	Outage		Synchronization		Reason of Outage
		Date	Time	Date	Time	
1	104	17.02.17	12.10	01.04.17	11.36	Unit tripped due to internal fault
		18.04.17	15.35	20.04.17	19.47	GT#2 swapped by GT#1 and started after getting schedule.
		27.04.17	00.39	02.06.17	12.36	Stopped due to low demand and high frequency
		02.06.17	19.34	05.06.17	14.20	
		07.06.17	10.34	13.06.17	15.49	
		16.06.17	07.27	17.06.17	09.51	
		20.06.17	11.08	11.07.17	17.48	
		11.07.17	16.17	27.07.17	11.26	
		07.08.17	12.03	11.08.17	12.33	Unit tripped due to internal fault
		14.08.17	07.37	14.08.17	12.12	
		15.08.17	16.46	15.08.17	21.30	Gt#1 remain stopped due to no schedule and started after getting schedule.
		15.08.17	21.30	16.08.17	11.03	
		22.08.17	11.24	22.08.17	12.09	Unit tripped due to internal fault
		24.09.17	20.20	25.09.17	11.00	Unit stopped to attend hot spot
		25.09.17	11.00	25.09.17	12.44	Stopped due to low demand and high frequency
26.11.17	01.34	26.11.17	05.40	Unit tripped due to grid disturbance		

Unit No	Capacity in MW	Outage		Synchronization		Reason of Outage
		Date	Time	Date	Time	
2	104	01.04.17	13.14	06.04.17	09.00	GT#2 swapped by GT#1
		06.04.17	09.00	06.04.17	19.00	GT#2 was unavailable for Planned Maintenance
		06.04.17	19.00	18.04.17	14.05	Stopped due to low demand and high frequency
		17.06.17	09.01	17.06.17	12.00	Stopped due to internal fault.
		17.06.17	12.00	21.06.17	05.40	Stopped due to low demand and high frequency
		01.08.17	08.58	01.08.17	11.15	Tripped due to as pressure low
		01.08.17	13.47	01.08.17	18.10	Unit tripped due to internal fault
		08.08.17	07.08	08.08.17	08.25	
		08.09.17	12.29	08.09.17	13.49	Unit tripped due to grid disturbance
		23.09.17	11.27	24.09.17	20.56	Stopped due to low demand and high frequency
		31.10.17	14.00	03.11.17	22.41	Stopped for planned inspection.
		04.11.17	06.20	04.11.17	10.13	Unit tripped due to internal fault
		08.11.17	08.54	08.11.17	11.44	Unit tripped due to internal fault
		26.11.17	01.34	26.11.17	02.25	Unit tripped due to grid disturbance

Unit No	Capacity in MW	Outage		Synchronization		Reason of Outage
		Date	Time	Date	Time	
STG	122	24.04.17	09.33	27.04.17	10.49	STG tripped on internal fault.
		24.05.17	10.38	24.05.17	12.12	
		17.06.17	09.03	17.06.17	11.18	Desynchronized as G.T.-2 tripped on internal fault.
		20.06.17	11.08	21.06.17	08.45	Stopped due to low demand and high frequency
		08.08.17	07.08	08.08.17	09.50	Unit tripped due to internal fault
		25.08.17	17.23	25.08.17	18.54	Unit stopped to attend internal fault
		08.09.17	12.29	08.09.17	13.55	Unit tripped due to grid disturbance
		11.09.17	05.26	11.09.17	09.15	Unit stopped to attend hot spot
		14.10.17	08.48	14.10.17	11.02	Unit tripped due to internal fault
		15.10.17	08.52	15.10.17	13.18	
		16.10.17	05.34	16.10.17	10.14	
		01.11.17	17.44	01.11.17	18.25	Unit tripped due to internal fault
26.11.17	01.19	26.11.17	11.02	Unit tripped due to grid disturbance		

(D) BADARPUR THERMAL POWER STATION

Unit	Capacity in MW	Outage		Synchronization		Reason of Outage
		Date	Time	Date	Time	
1	95	20.11.14	00.00	30.11.17	23.59	Not in operation due to not meeting pollution norms.

Unit	Capacity in MW	Outage		Synchronization		Reason of Outage
		Date	Time	Date	Time	
2	95	24.09.15	19.52	30.11.17	23.59	Not in operation due to not meeting pollution norms.

Unit	Capacity in MW	Outage		Synchronization		Reason of Outage
		Date	Time	Date	Time	
3	95	09.10.15	01.00	30.11.17	23.59	Not in operation due to not meeting pollution norms.

Unit	Capacity in MW	Outage		Synchronization		Reason of Outage
		Date	Time	Date	Time	
4	210	04.04.17	05.17	17.04.17	07.13	Stopped due to low demand and high frequency
		29.04.17	10.37	29.04.17	12.42	Generator protection
		06.05.17	18.08	06.05.17	22.49	Hot spot on GT Bushing
		31.05.17	14.00	05.06.17	07.31	Stopped due to low demand and high frequency
		23.06.17	21.27	25.06.17	10.45	Stopped due to water wall leakage BTL.
		25.06.17	10.45	26.06.17	05.20	AVR excitation problem.
		07.07.17	18.12	08.07.17	20.10	Water wall leakage
		10.08.17	03.17	10.08.17	06.38	UTT/ST Problem.
		05.09.17	00.30	05.09.17	22.15	Water wall tube leakage
		12.09.17	17.13	14.09.17	09.55	Reheater tube leakage
		19.09.17	16.52	20.09.17	14.57	Wall wall tube leakage
		24.09.17	09.39	27.09.17	08.56	Stopped due to low demand and high frequency
16.10.17	23.47	30.11.17	23.59	Stopped by DPCC due to not meeting pollution norms Stopped by DPCC		

Unit	Capacity in MW	Outage		Synchronization		Reason of Outage
		Date	Time	Date	Time	
5	210	21.12.16	00.00	04.04.17	01.39	Stopped due to low demand and high frequency
		13.05.17	14.44	14.05.17	00.05	PA Fan 5A motor shaft shared
		14.05.17	00.06	14.05.17	05.34	Generation excitation low
		27.05.17	19.15	28.05.17	11.30	
		28.05.17	11.30	29.05.17	07.36	
		29.06.17	19.56	03.07.17	10.38	Stopped due to low demand and high frequency
		16.10.17	23.24	30.11.17	23.59	Stopped by DPCC due to not meeting pollution norms Stopped by DPCC

(E) BAWANA CCGT POWER STATION

Unit	Capacity in MW	Outage		Synchronization		Reason of Outage
		Date	Time	Date	Time	
1	216	07.02.17	19:20	09.05.17	15:32	low or No scheduling of Bawana. (Trial Run)
		09.05.17	16:47	10.05.17	4:30	low or No scheduling of Bawana. (Trial Run)
		10.05.17	13:21	12.05.17	5:40	Stopped due to low demand and high frequency
		21.05.17	16:48	21.05.17	18:30	Black Out (Grid Restore@18:30 hrs.)
		21.05.17	18:30	24.05.17	10:18	Stopped due to low demand and high frequency
		31.05.17	20:15	16.06.17	16:50	
		16.06.17	00:00	16.06.17	16:50	
		17.06.17	19:30	17.06.17	7:41	
		19.06.17	17:39	19.06.17	8:11	
		23.06.17	19:01	23.06.17	8:05	
		25.06.17	12:35	25.06.17	6:54	
		06.08.17	12:32	06.08.17	14:44	Due to some maintenance work unit was taken out.
		07.08.17	12:39	07.08.17	14:27	Mixing of 220V AC & 110 DC.
		19.08.17	17:40	24.08.17	08:23	low or No scheduling of Bawana .
		25.09.17	11:04	07.10.17	15:00	Stopped due to internal fault
		07.10.17	15:00	07.10.17	21:09	Stopped due to low demand and high frequency
		01.11.17	03:36	01.11.17	06:08	GT#1 unloaded due to malfunction of limit switch of compressor bleed valve which was supposed to be closed.
		05.11.17	13:27	05.11.17	21:40	Filter replacement
17.11.17	04:15	19.11.17	21:00			

Unit	Capacity in MW	Outage		Synchronization		Reason of Outage
		Date	Time	Date	Time	
2	216	08.12.16	06:35	31.05.17	16:52	Stopped due to low demand and high frequency
		03.06.17	12:04	05.07.17	13:47	
		23.07.17	13:57	24.07.17	16:19	
		04.08.17	11:30	04.08.17	18:30	Tripped due to internal fault
		07.08.17	12:41	08.08.17	10:43	Stopped due to low demand and high frequency
		29.08.17	12:00	29.08.17	23:59	
01.09.17	00:00	30.11.17	23:59	Upgradation and overhauling of generator.		

Unit	Capacity in MW	Outage		Synchronization		Reason of Outage
		Date	Time	Date	Time	
STG-1	254	07.02.17	19:24	09.05.17	18:00	Minor Overhauling.(DC introduced w.e.f.18:00 hrs.)
		09.05.17	18:00	12.05.17	15:19	Stopped due to low demand and high frequency
		21.05.17	16:48	21.05.17	18:30	Black Out (Grid Restore@ 18:30 hrs.)
		21.05.17	18:30	24.05.17	9:01	Turbine Roter mtc.
		24.05.17	9:01	24.05.17	16:13	Stopped due to low demand and high frequency
		26.05.17	2:35	26.05.17	3:27	Due to AVR trouble alarm, Master relay operated and caused Generator Circuit Breaker of STG#1 to open. "Load shed detected" appeared in alarm list.
		31.05.17	5:13	31.05.17	7:26	Due to AVR trouble alarm, Master relay operated and caused Generator Circuit Breaker of STG#1 to open. "Load shed detected" appeared in alarm list. Malfunction of one Digital Input card which generates this signal was suspected.
		31.05.17	13:25	31.05.17	16:30	Due to AVR trouble alarm, Master relay operated and caused Generator Circuit Breaker of STG#1 to open. "Load shed detected" appeared in alarm list. Malfunctioning of OverVoltage Relay circuit generated this AVR Trouble alarm which caused Master Relay to operate.
		03.06.17	12.04	19.06.17	14.05	
		19.06.17	18.55	25.06.17	12.32	Stopped due to low demand and high frequency
		07.08.17	00.00	07.08.17	19.58	Mixing of 220V AC and 110V DC.
		25.09.17	11.16	28.09.17	19.30	Stopped due to internal fault
		28.09.17	19.30	07.10.17	15.00	Stopped due to non availability of G.T.-I & II
		07.10.17	15.00	08.10.17	07.48	Stopped due to low demand and high frequency
		01.11.17	03.45	01.11.17	08.08	Unit tripped manually
		05.11.17	13.33	05.11.17	23.11	Filter replacement
08.11.17	10.46	08.11.17	12.31	Tripped dueto AVR trouble		
17.11.17	04.15	19.11.17	21.00	Filter replacement		

Unit	Capacity in MW	Outage		Synchronization		Reason of Outage
		Date	Time	Date	Time	
3	216	15.04.17	16.06	03.05.17	16.55	Stopped due to low demand and high frequency
		04.05.17	00.12	04.05.17	02.32	When lead selection was given to AOP-2, as per logic, AOP-1 stopped. But Pr. Transmitter sensed a dip in the lube oil pressure causing tripping of GT#3. AOP-1 came back in service with a time delay of 4 sec after command from Mark-VI.
		06.05.17	00.15	13.06.17	17.07	
		13.06.17	20.30	06.09.17	11.47	
		06.09.17	23.16	12.09.17	08.00	Stopped due to low demand and high frequency
		12.09.17	08.00	04.10.17	10.30	
		04.10.17	10.30	13.10.17	24.00	
		14.10.17	10.15	15.10.17	09.30	Unit tripped on internal fault.
		15.10.17	09.30	17.11.17	11.52	
		19.11.17	20.38	21.11.17	15.55	
24.11.17	21.16	30.11.17	23.59	Stopped due to low demand and high frequency		

Unit	Capacity in MW	Outage		Synchronization		Reason of Outage
		Date	Time	Date	Time	
4	216	01.04.17	11.25	24.05.17	05.23	Stopped due to low demand and high frequency
		24.05.17	14.16	03.06.17	18.26	
		06.06.17	17.35	06.06.17	22.06	Due to Burning of PT circuit wire caused unbalance of voltage in relay thereby resulting in Stator Earth Fault.
		13.06.17	14.42	13.06.17	19.23	It was suspected that probably a mixing of AC & DC signals occurred instantaneously in the DDC panel (CRE 43 & 44) which controls the operations of all the Breakers from the remote (ECP/ OWS System), without any process command which resulted in instantaneous Trip command to Breakers.
		25.06.17	13.32	19.08.17	06.17	Due to changeover the machine.
		06.09.17	23.59	13.09.17	09.52	Stopped due to low demand and high frequency
		18.09.17	15.29	18.09.17	18.24	Due to earth rotar fault
		22.09.17	22.04	27.09.17	08.31	
		01.10.17	00.00	15.10.17	24.00	Stopped due to low demand and high frequency
		16.10.17	00.00	29.10.17	16.30	Unit tripped on internal fault.
		29.10.17	16.30	01.11.17	12.10	
		01.11.17	19.49	08.11.17	12.23	
		21.11.17	16.50	30.11.17	23.59	Stopped due to low demand and high frequency

Unit	Capacity in MW	Outage		Synchronization		Reason of Outage
		Date	Time	Date	Time	
STG-2	254	03.05.17	17.40	03.05.17	19.05	While checking the operation of LPBP of HRSG-3 inadvertently the CV got fully opened causing condenser vaccum to drop rapidly and STG-2 tripped on Low Condenser Vaccum
		12.05.17	17.30	04.06.17	00.14	Stopped due to low demand and high frequency
		04.06.17	14.38	04.06.17	17.00	Malfunction of DVR system apprehended which caused Field Breaker to open. The probable reason which would have caused this problem was the high ambient temperature inside the Thyristor Panel Room.
		04.06.17	18.39	04.06.17	21.34	Again Malfunction of DVR system apprehended which caused Field Breaker to open. The probable reason which would have caused this problem was the high ambient temperature inside the Thyristor Panel Room.
		06.06.17	17.35	07.06.17	01.18	Burning of PT circuit wire caused unbalance of voltage in relay thereby resulting in Stator Earth Fault.
		25.06.17	13.37	19.08.17	17.09	Stopped due to low demand and high frequency
		28.08.17	11.40	28.08.17	13.09	Tripped due to internal fault
		06.09.17	20.26	28.09.17	18.57	Stopped due to internal fault
		01.10.17	00.05	01.10.17	02.12	Tripped on low vaccum.
		08.10.17	00.09	30.11.17	23.59	Tripped on internal fault.

(F) RITHALA POWER STATION

Unit	Capacity in MW	Outage		Synchronization		Reason of Outage
		Date	Time	Date	Time	
1	31.8	19.03.13	17:32	30.11.17	23.59	Stopped due to low demand and high frequency

Unit	Capacity in MW	Outage		Synchronization		Reason of Outage
		Date	Time	Date	Time	
2	31.8	07.06.13	22:41	30.11.17	23.59	Stopped due to low demand and high frequency

Unit	Capacity in MW	Outage		Synchronization		Reason of Outage
		Date	Time	Date	Time	
STG	31.8	07.06.13	22:38	30.11.17	23.59	Stopped due to low demand and high frequency

4 ALLOCATION OF POWER TO DELHI

A) Time block 00.00hrs. to 24.00hrs. @ 0% allocation from Unallocated Quota from 01.04.2017

Name of the Stn	Installed capacity	Total Un-allocated	Basic Allocation	Basic Allocation at periphery	Allocation out of Unallocated Quota	Allocation out of Un-allocation Quota at Delhi periphery	Total allocation at Delhi periphery
1	2	3	4	5	6	7	(8)=(5)+(7)
NTPC STATIONS							
Singrauli STPS	2000	300	150	130	0	0	130
Rihand-I	1000	150	100	87	0	0	87
Rihand Stage -II	1000	150	126	109	0	0	109
Rihand Stage -III	1000	150	132	115	0	0	115
ANTA GPS	419	63	44	41	0	0	41
Auriya GPS	663.36	99	72	67	0	0	67
Dadri GPS	829.78	129	91	85	0	0	85
Dadri NCTPS (Th)	840	0	756	657	0	0	657
Dadri NCTPS (Th) Stage-II	980	147	735	639	0	0	639
Unchahaar-I TPS	420	20	24	21	0	0	21
Unchahaar-II TPS	420	63	47	41	0	0	41
Unchahaar-III TPS	210	31	29	25	0	0	25
TOTAL	9782	1302	2306	2016	0	0	2016
NHPC							
Baira Suil HPS	180	0	20	19	0	0	19
Salal HPS	690	0	80	76	0	0	76
Tanakpur HEP	94	0	12	11	0	0	11
Chamera HEP	540	0	43	41	0	0	41
Chamera-II HEP	300	54	40	38	0	0	38
Chamera-III HEP	231	35	29	28	0	0	28
URI-I HEP	480	0	53	50	0	0	50
URI-II HEP	240	0	32	31	0	0	31
Sewa HEP	120	18	16	15	0	0	15
Dhaulti Ganga HEP	280	42	37	35	0	0	35
Dulhasti HEP	390	58	50	48	0	0	48
Parbati-III HEP	520	66	66	63	0	0	63
TOTAL	4065	272	479	455	0	0	455
NPC							
Narora APS	440	64	47	41	0	0	41
RAPP (C)	440	64	56	49	0	0	49
TOTAL	880	128	103	89	0	0	89
SJVNL							
Nathpa Jhakri HEP	1500	149	142	135	0	0	135
THDC							
Tehri Hydro	1000	99	63	60	0	0	60
Koteshwar HEP	400	40	39	37	0	0	37
TOTAL	1400	139	102	97	0	0	97
Total	17627	1990	3132	2793	0	0	2793
Allocation from ER and Tala HEP							
Farakka	1600	0	22	19	0	0	19
Kahalgaon	840	0	51	43	0	0	43
Talchar	1000	0	0	0	0	0	0
Tala HEP	1020	153	30	25	0	0	25
Kahalgaon-II	1500	0	157	131	0	0	131
Total ER	5960	153	261	217	0	0	217
Joint Venture							
Jhajjar TPS	1500	114	693	622	0	0	622
Ultra Mega Projects							
Sasan	3960	0	446	400	0	0	400
Grand Total	29047	2257	4531	4032	0	0	4032

5 ALLOCATION OF POWER TO DISCOMS

A) ALLOCATION OF POWER TO VARIOUS LICENCEES AS PER ORDER OF DERC AND DECISION OF GNCTD FOR ALLOCATION OF CENTRAL SECTOR STATIONS (DADRI THERMAL & BTPS) AND STATE SECTOR GENERATING STATIONS w.e.f. 06.08.2013.

(Allocation In %)

(A) 10.00hrs. to 17.00hrs.

SOURCES	LICENSEES					
	NDMC	MES	NDPL	BRPL	BYPL	TOTAL
1. Central Sector without Dadri (Th)	0	0	29.18	43.58	27.24	100.00
2. Dadri (Th)	16.63	0	24.22	36.86	22.39	100.00
3. BTPS	17.73	7.09	21.81	33.2	20.17	100.00
4. RPH	0	0	29.025	44.133	26.842	100.00
5. GT	0	0	29.02	44.16	26.82	100.00
6. Pragati	30.3	0	20.22	30.78	18.7	100.00
7. DVC	0	0	29.18	43.58	27.24	100.00
8. BAWANA CCGT*	7.30	1.82	20.688	30.888	19.304	80.00

(B) 00.00hrs. to 10.00hrs. and 17.00hrs. to 24.00hrs.

SOURCES	LICENSEES					
	NDMC	MES	NDPL	BRPL	BYPL	TOTAL
1. Central Sector without Dadri (Th)	0	0	29.18	43.58	27.24	100.00
2. Dadri (Th)	16.53	0	24.22	36.86	22.39	100.00
3. BTPS	17.73	7.09	21.81	33.2	20.17	100.00
4. RPH	0	0	29.025	44.133	26.842	100.00
5. GT	0	0	29.02	44.16	26.82	100.00
6. Pragati	30.3	0	20.22	30.78	18.7	100.00
7. DVC	0	0	29.18	43.58	27.24	100.00
8. BAWANA CCGT*	7.30	1.82	20.688	30.888	19.304	80.00

* 20% POWER OF BAWANA CCGT ALLOCATED TO HARYANA (10%) & PUNJAB (10%)

6 POWER AVAILABILITY-DEMAND POSITION AT THE TIME OF PEAK DEMAND MET DURING NOVEMBER 2017

Date	Time of peak demand	Generation within Delhi										Import from the Grid	Schedule from the Grid	OD(-)/UD(+)	Demand met	Shedding	Un-Restricted Demand
		RP H	GT	PPCL	Rithala	Bawana	Towmcl	East Delhi	DMS WL	BTPS	Total						
(1)	(2)	(3)	(4)	(5)	(6)	(7)	(8)				(9)=(3) to (8)	(10)	(11)	(12)=(11)-(10)	(13)=(11)+(12)	(14)	(15)=(13)+(14)
1	18.22.59	0	37	151	0	270	16	3	14	-4	487	3208	3101	107	3695	0	3695
2	18.01.39	0	73	150	0	229	16	-2	10	-4	472	3218	3089	129	3690	0	3690
3	18.27.35	0	43	151	0	197	16	1	11	-4	415	3268	3118	150	3683	0	3683
4	18.31.13	0	35	269	0	214	16	-1	5	-4	534	2827	2788	39	3361	0	3361
5	11.05.45	0	35	267	0	124	16	-1	13	-4	450	2776	2716	60	3226	0	3226
6	18.08.54	0	35	286	0	230	16	4	13	-4	580	2974	2933	41	3554	0	3554
7	18.17.53	0	35	265	0	232	16	2	11	-4	557	2942	2940	2	3499	0	3499
8	17.50.49	0	92	271	0	408	16	4	15	-4	802	2743	2533	210	3545	0	3545
9	10.55.05	0	70	254	0	413	16	-2	11	-4	758	2756	2715	41	3514	0	3514
10	10.27.39	0	71	275	0	374	16	-2	10	-4	740	2861	2766	95	3601	0	3601
11	10.25.19	0	72	264	0	365	16	-1	11	-4	723	2635	2535	100	3358	0	3358
12	11.03.56	0	72	265	0	246	16	-1	12	-4	606	2600	2436	164	3206	0	3206
13	10.16.00	0	72	271	0	251	16	-1	14	-4	619	2742	2678	64	3361	0	3361
14	10.11.45	0	71	265	0	310	16	3	10	-4	671	2719	2643	76	3390	0	3390
15	10.23.20	0	72	271	0	326	16	4	13	-4	698	2672	2590	82	3370	0	3370
16	10.09.28	0	73	266	0	248	16	3	15	-4	617	2775	2685	90	3392	0	3392
17	10.15.47	0	73	310	0	172	16	2	7	-4	576	2915	2696	219	3491	0	3491
18	10.16.09	0	72	263	0	354	16	2	7	-4	710	2595	2460	135	3305	0	3305
19	10.10.57	0	68	265	0	288	14	2	7	-4	640	2795	2575	220	3435	0	3435
20	10.17.23	0	67	266	0	324	16	2	7	-4	678	2641	2638	3	3319	0	3319
21	10.23.21	0	68	256	0	463	16	2	14	-4	815	2537	2597	-60	3352	0	3352
22	10.19.00	0	67	270	0	462	16	2	10	-4	823	2575	2447	128	3398	0	3398
23	10.03.20	0	68	267	0	442	15	4	7	-4	799	2732	2586	146	3531	0	3531
24	10.31.33	0	75	275	0	437	16	4	12	-4	815	2735	2571	164	3550	0	3550
25	10.31.26	0	75	275	0	290	16	3	13	-4	668	2687	2604	83	3355	0	3355
26	10.39.41	0	75	178	0	253	16	3	10	-4	531	2872	2740	132	3403	0	3403
27	10.16.09	0	75	270	0	291	16	-1	11	-4	658	2780	2759	21	3438	0	3438
28	10.09.27	0	74	274	0	312	16	-1	12	-4	683	2637	2655	-18	3320	0	3320
29	10.31.30	0	75	272	0	252	16	2	11	-4	624	2841	2771	70	3465	0	3465
30	10.25.03	0	75	273	0	280	9	-1	10	-4	642	2888	2775	113	3530	0	3530

POWER AVAILABILITY- DEMAND POSITION AT THE TIME OF MAXIMUM UNRESTRICTED DEMAND DURING NOVEMBER 2017

Date	Time of peak demand	Generation within Delhi										Import from the Grid	Schedule from the Grid	OD(-)/UD(+)	Demand met	Shedding	Un-Restricted Demand
		RP H	GT	PPCL	Rithal a	Bawana	Towmcl	East Delhi	DMS WL	BTPS	Total						
(1)	(2)	(3)	(4)	(5)	(6)	(7)	(8)				(9)= (3) to (8)	(10)	(11)	(12)= (11) - (10)	(13)= (11)+ (12)	(14)	(15)= (13)+ (14)
1	18.22.59	0	37	151	0	270	16	3	14	-4	487	3208	3101	107	3695	0	3695
2	18.01.39	0	73	150	0	229	16	-2	10	-4	472	3218	3089	129	3690	0	3690
3	18.27.35	0	43	151	0	197	16	1	11	-4	415	3268	3118	150	3683	0	3683
4	18.31.13	0	35	269	0	214	16	-1	5	-4	534	2827	2788	39	3361	0	3361
5	11.05.45	0	35	267	0	124	16	-1	13	-4	450	2776	2716	60	3226	0	3226
6	18.08.54	0	35	286	0	230	16	4	13	-4	580	2974	2933	41	3554	0	3554
7	18.17.53	0	35	265	0	232	16	2	11	-4	557	2942	2940	2	3499	0	3499
8	17.50.49	0	92	271	0	408	16	4	15	-4	802	2743	2533	210	3545	0	3545
9	10.55.05	0	70	254	0	413	16	-2	11	-4	758	2756	2715	41	3514	0	3514
10	10.27.39	0	71	275	0	374	16	-2	10	-4	740	2861	2766	95	3601	0	3601
11	10.25.19	0	72	264	0	365	16	-1	11	-4	723	2635	2535	100	3358	0	3358
12	11.03.56	0	72	265	0	246	16	-1	12	-4	606	2600	2436	164	3206	0	3206
13	10.16.00	0	72	271	0	251	16	-1	14	-4	619	2742	2678	64	3361	0	3361
14	10.11.45	0	71	265	0	310	16	3	10	-4	671	2719	2643	76	3390	0	3390
15	10.23.20	0	72	271	0	326	16	4	13	-4	698	2672	2590	82	3370	0	3370
16	10.09.28	0	73	266	0	248	16	3	15	-4	617	2775	2685	90	3392	0	3392
17	10.15.47	0	73	310	0	172	16	2	7	-4	576	2915	2696	219	3491	0	3491
18	10.16.09	0	72	263	0	354	16	2	7	-4	710	2595	2460	135	3305	0	3305
19	10.10.57	0	68	265	0	288	14	2	7	-4	640	2795	2575	220	3435	0	3435
20	10.17.23	0	67	266	0	324	16	2	7	-4	678	2641	2638	3	3319	0	3319
21	10.23.21	0	68	256	0	463	16	2	14	-4	815	2537	2597	-60	3352	0	3352
22	10.19.00	0	67	270	0	462	16	2	10	-4	823	2575	2447	128	3398	0	3398
23	10.03.20	0	68	267	0	442	15	4	7	-4	799	2732	2586	146	3531	0	3531
24	10.31.33	0	75	275	0	437	16	4	12	-4	815	2735	2571	164	3550	0	3550
25	10.31.26	0	75	275	0	290	16	3	13	-4	668	2687	2604	83	3355	0	3355
26	10.39.41	0	75	178	0	253	16	3	10	-4	531	2872	2740	132	3403	0	3403
27	10.16.09	0	75	270	0	291	16	-1	11	-4	658	2780	2759	21	3438	0	3438
28	10.09.27	0	74	274	0	312	16	-1	12	-4	683	2637	2655	-18	3320	0	3320
29	10.31.30	0	75	272	0	252	16	2	11	-4	624	2841	2771	70	3465	0	3465
30	10.25.03	0	75	273	0	280	9	-1	10	-4	642	2888	2775	113	3530	0	3530

SOURCEWISE SCHEDULED DRAWL FROM NORTHERN GRID AS WELL AS AVAILABILITY WITHIN DELHI FOR NOVEMBER 2017

A) AVAILABILITY FROM GENCO AND PRAGATI STNs. (all fig in MUs)

A (i) RPH	0.000
(ii) GT+STG	52.107
(iii) PRAGATI	189.249
(iv) RITHALA	0.000
(v) BAWANA CCGT	208.782
(vi) Timarpur – Okhla	13.740
EDWPCL	2.103
DMSWL	9.022
TOTAL	475.003
B) AVAILABILITY FROM BTPS	-2.359
C) AUXILIARY CONSUMPTION OF GENERATING STNs. EXCLUDING BTPS	17.806
D) NET GENERATION AVAILABLE WITHIN DELHI(A+B-C)	454.838

B) SOURCE WISE SCHEDULED DRAWL FROM THE NORTHERN GRID

NAME OF THE STATION	AVAILABILITY AT POWER PLANT	AVAILABILITY AT DELHI PERIPHERY	ALLOCATION MADE BY NRLDC AT POWER PLANT	ALLOCATION MADE BY NRLDC AT DELHI PERIPHERY
B/SUIL	1.504	1.448	1.504	1.448
SALAL	10.158	9.779	10.158	9.779
SASAN	292.662	281.585	286.630	275.801
TANKAPUR	3.137	3.024	3.137	3.024
CHAMERA	3.918	3.770	3.918	3.770
CHAMERA -II	6.083	5.858	6.083	5.858
CHAMERA -III	3.618	3.484	3.618	3.484
DHAULIGANGA	6.098	5.873	6.098	5.873
SEWA -2	1.210	1.166	1.210	1.166
URI	5.593	5.378	5.593	5.378
URI-II	4.814	4.628	4.809	4.625
KOLDAM	0.000	0.000	0.000	0.000
KOTESHWAR	6.528	6.282	6.528	6.282
PARBATI3	2.478	2.387	2.478	2.387
RAMPUR	0.000	0.000	0.000	0.000
MUNDRA_UMPP	0.000	0.000	0.000	0.000
ANTA (GAS)	0.018	0.018	0.000	0.000
ANTA (RLNG)	30.584	29.426	0.023	0.022
ANTA (LIQUID)	0.000	0.000	0.000	0.000
DADRI (GAS)	14.031	13.496	7.151	6.876
DADRI (RLNG)	17.609	16.945	0.003	0.003
DADRI (LIQUID)	31.536	30.344	0.000	0.000
AURAIYA (GAS)	0.000	0.000	0.000	0.000
AURAIYA (RLNG)	24.749	23.811	0.019	0.019
AURAIYA (LIQUID)	24.638	23.707	0.000	0.000
SINGRAULI	76.860	74.065	71.500	68.903
RIHAND -I	65.661	63.179	58.470	56.276
RIHAND -II	84.859	81.652	76.992	74.108
RIHAND -III	89.516	86.132	74.329	71.547
UNCHAHAHAR-I	7.191	6.917	5.974	5.747
UNCHAHAHAR-II	28.376	27.312	23.680	22.794
UNCHAHAHAR-III	18.720	18.012	15.521	14.934
UNCHAHAHAR-IV	0.325	0.313	0.010	0.010
DADRI (TH)	498.053	479.226	197.105	189.824
DADRI (TH) STAGE-II	498.210	479.377	401.258	386.140
NAPP	31.202	30.021	31.169	29.990
RAPP 'B'	0.000	0.000	0.000	0.000
RAPP 'C'	38.088	36.651	38.088	36.651

NAME OF THE STATION	AVAILABILITY AT POWER PLANT	AVAILABILITY AT DELHI PERIPHERY	ALLOCATION MADE BY NRLDC AT POWER PLANT	ALLOCATION MADE BY NRLDC AT DELHI PERIPHERY
NATHPA JHAKRI	27.485	26.461	20.503	19.740
DULASTI	15.066	14.513	15.066	14.513
TEHRI	12.113	11.655	12.113	11.655
JHAJJAR	335.185	322.507	233.764	224.923
KHELGAON	27.377	26.366	19.965	19.234
KHELGAON-II	105.763	101.762	84.233	81.068
FARAKA	13.138	12.643	8.896	8.565
TALA	5.411	5.211	5.411	5.211
TALCHER	0.000	0.000	0.000	0.000
DVC	224.602	222.997	222.997	214.400
CHATTISHGARH	0.000	0.000	0.000	0.000
TRIPURA	0.000	0.000	0.000	0.000
MEGHALAYA	0.474	0.468	0.468	0.452
GOA	0.000	0.000	0.000	0.000
ANDHRA	0.000	0.000	0.000	0.000
MADHYA PRADESH	0.000	0.000	0.000	0.000
METHON POWER(NDPL)LT-06	86.469	85.881	85.881	82.635
DVC MEJIA (LT-08)(BYPL)	65.063	64.600	64.600	62.125
URS	0.000	0.000	0.000	0.000
JAMMU & KASHMIR	0.763	0.750	0.750	0.722
HIMACHAL PRADESH	6.471	6.314	6.314	6.077
ASSAM	0.000	0.000	0.000	0.000
KARNATAKA	0.041	0.041	0.041	0.039
NAGALAND	2.120	2.110	2.110	2.023
DVC LT-9	0.000	0.000	0.000	0.000
HARYANA (LT-05)	56.520	55.578	55.578	53.550
SIKKIM	0.559	0.552	0.552	0.529
WEST BENGAL	0.000	0.000	0.000	0.000
UTTRANCHAL	0.000	0.000	0.000	0.000
TAMILNAIDU	0.000	0.000	0.000	0.000
MANIPUR	0.000	0.000	0.000	0.000
RAJASTHAN(SOLAR) BRPL-LT36	3.111	3.016	3.016	2.902
RAJASTHAN(SOLAR) BYPL - LT-35	3.143	3.047	3.047	2.931
RAJASTHAN(SOLAR) TPDDL LT-31	3.041	2.948	2.948	2.836
TO GOA	0.000	0.000	0.000	0.000
TO ANDHRA	-47.610	-48.012	-48.012	-49.956
TO MADHYA PRADESH	-138.370	-140.860	-140.860	-146.400
TO MANIPUR	-1.600	-1.620	-1.620	-1.691
TO UTTAR PRADESH	0.000	0.000	0.000	0.000
TO J&K	-126.527	-128.747	-128.747	-133.810
TO TAMILNADU	-0.325	-0.329	-0.329	-0.346
TO BIHAR	-0.195	-0.198	-0.198	-0.205
TO MEGHALAYA	-2.180	-2.200	-2.200	-2.306
TO TRIPURA	0.000	0.000	0.000	0.000
BTPS TO MP	0.000	0.000	0.000	0.000
TO HIMACHAL PRADESH	-183.883	-189.267	-189.267	-196.697
TO HARYANA	0.000	0.000	0.000	0.000
POWER EXCHANGE(IEX)	17.328	16.688	17.328	16.688
TO POWER EXCHANGE (IEX)	-110.275	-114.507	-110.275	-114.507
POWER EXCHANGE(PX)	0.000	0.000	0.000	0.000
TO POWER EXCHANGE (PX)	0.000	0.000	0.000	0.000
TO SHARE PROJECT (HARYANA)	-13.196	-13.718	-13.196	-13.718
TO SHARE PROJECT (PUNJAB)	-13.111	-13.631	-13.111	-13.631
TOTAL	2301.997	2188.286	1560.826	1452.273

C) AGENCY WISE BREAKUP OF ENERGY SCHEDULED DRAWL FROM THE GRID

NAME OF THE STATION	AVAILABILITY AT POWER PLANT	AVAILABILITY AT DELHI PERIPHERY	ALLOCATION MADE BY NRLDC AT POWER PLANT	ALLOCATION MADE BY NRLDC AT DELHI PERIPHERY
NTPC - NR	1510.935	1453.932	932.037	897.203
NTPC - ER	146.278	140.771	113.094	108.867
NHPC	63.678	61.308	63.673	61.305
NPC	69.290	66.672	69.257	66.641
SASAN	292.662	281.585	286.630	275.801
KOTESHWAR	6.528	6.282	6.528	6.282
MUNDRA_UMPP	0.000	0.000	0.000	0.000
NATHPA JHAKRI	27.485	26.461	20.503	19.740
TEHRI	12.113	11.655	12.113	11.655
TALA	5.411	5.211	5.411	5.211
JHAJJAR	335.185	322.507	233.764	224.923
TALCHER	0.000	0.000	0.000	0.000
RAJASTHAN SOLAR(BRPL)T-36	3.111	3.016	3.016	2.902
RAJASTHAN SOLAR(BYPL)T-35	3.143	3.047	3.047	2.931
RAJASTHAN SOLAR(TPDDL)T-31	3.041	2.948	2.948	2.836
DVC	224.602	222.997	222.997	214.400
CHATTISHGARH	0.000	0.000	0.000	0.000
TRIPURA	0.000	0.000	0.000	0.000
MEGHALAYA	0.474	0.468	0.468	0.452
GOA	0.000	0.000	0.000	0.000
ANDHRA	0.000	0.000	0.000	0.000
MADHYA PRADESH	0.000	0.000	0.000	0.000
METHON POWER (NDPL)-LT-06	86.469	85.881	85.881	82.635
DVC MEJIA (LT-08)(BYPL)	65.063	64.600	64.600	62.125
URS	0.000	0.000	0.000	0.000
JAMMU & KASHMIR	0.763	0.750	0.750	0.722
HIMACHAL PRADESH	6.471	6.314	6.314	6.077
ASSAM	0.000	0.000	0.000	0.000
KARNATAKA	0.041	0.041	0.041	0.039
NAGALAND	2.120	2.110	2.110	2.023
DVC (FOR NDPL) LT-09	0.000	0.000	0.000	0.000
HARYANA (LT -05)	56.520	55.578	55.578	53.550
SIKKIM	0.559	0.552	0.552	0.529
WEST BENGAL	0.000	0.000	0.000	0.000
UTTRANCHAL	0.000	0.000	0.000	0.000
TAMILNAIDU	0.000	0.000	0.000	0.000
MANIPUR	0.000	0.000	0.000	0.000
POWER EXCHANGE(IEX)	17.328	16.688	17.328	16.688
POWER EXCHANGE(PX)	0.000	0.000	0.000	0.000
TOTAL	2939.271	2841.375	2208.641	2125.539

D) AGENCY WISE BREAKUP OF ENERGY SCHEDULED BY NRLDC FOR EXPORT TO OTHER UTILITIES FROM DTL

NAME OF THE STATION	AVAILABILITY AT POWER PLANT	AVAILABILITY AT PERIPHERY	ALLOCATION MADE BY NRLDC AT POWER PLANT	ALLOCATION MADE BY NRLDC AT POWER PERIPHERY
TO GOA	0.000	0.000	0.000	0.000
TO ANDHRA	-47.610	-48.012	-48.012	-49.956
TO MADHYA PRADESH	-138.370	-140.860	-140.860	-146.400
TO MANIPUR	-1.600	-1.620	-1.620	-1.691
TO J&K	-126.527	-128.747	-128.747	-133.810
TO UTTAR PRADESH	0.000	0.000	0.000	0.000
TO TAMILNADU	-0.325	-0.329	-0.329	-0.346
TO BIHAR	-0.195	-0.198	-0.198	-0.205
TO MEGHALAYA	-2.180	-2.200	-2.200	-2.306
TO TRIPURA	0.000	0.000	0.000	0.000
BTPS TO MP	0.000	0.000	0.000	0.000
TO HIMACHAL PRADESH	-183.883	-189.267	-189.267	-196.697
TO HARYANA	0.000	0.000	0.000	0.000
TO POWER EXCHANGE (IEX)	-110.275	-114.507	-110.275	-114.507
TO POWER EXCHANGE (PX)	0.000	0.000	0.000	0.000
TO SHARE PROJECT (HARYANA)	-13.196	-13.718	-13.196	-13.718
TO SHARE PROJECT (PUNJAB)	-13.111	-13.631	-13.111	-13.631
TOTAL	-637.274	-653.088	-647.815	-673.266
TOTAL SCHEDULED DRAWAL FROM THE GRID	2301.997	2188.286	1560.826	1452.273

TOTAL CONSUMPTION INCLUDING AUX. OF GENERATING STNs. EXCLUDING BTPS	1914.510
NET CONSUMPTION	1896.704
AVAILABILITY WITHIN DELHI	454.838
ACTUAL DRAWAL FROM THE GRID	1441.866
OVER DRAWAL(+)/UNDER DRAWAL(-) FROM THE GRID ON THE BASIS OF SCHEDULED ALLOCATION MADE BY NRLDC TO DELHI AT PERIPHERY	-10.407
LOAD SHEDDING	0.560
UNRESTRICTED DEMAND (GROSS)	1915.070
UNRESTRICTED DEMAND (NET)	1897.264
MAX. NET CONSUMPTION	71.967 ON 03.11.2017
MAX. LOAD SHEDDING	125MW ON 29.11.2017 AT 06.10HRS.
PEAK LOAD	Peak Demand during the month
DAY PEAK	3601MW AT 10.27.39HRS ON 10.11.2017
EVENING PEAK	3695MW AT 18.22.59HRS ON 01.11.2017
P.L.F. OF GENCO AND PRAGATI STNs.	RPH GT PRAGATI RITHALA BAWANA Timarpur Okhla EDWPCL DMSWL
	00.00% 26.80% 79.65% 0.00% 21.15% 119.27% 24.34% 52.21%

SHEDDING DETAILS DURING THE MONTH OF NOVEMBER 2017.

ALL FIGURES IN MUs

DATE	No. of Under Freq. Relay Operated	Shedding due to under frequency relay operation in MUs					Shedding due to Grid Restrictions (Over drawl / low freq.)				
		BSES		NDPL	NDMC	TOTAL	BSES		NDPL	NDMC	MES
		BYPL	BRPL				BYPL	BRPL			
1	2	3	4	5	6	7=3 to 6	8	9	10	11	12
01.Nov.17	0	0.000	0.000	0.000	0.000	0.000	0.000	0.000	0.000	0.000	0.000
02.Nov.17	0	0.000	0.000	0.000	0.000	0.000	0.000	0.000	0.000	0.000	0.000
03.Nov.17	0	0.000	0.000	0.000	0.000	0.000	0.000	0.000	0.000	0.000	0.000
04.Nov.17	0	0.000	0.000	0.000	0.000	0.000	0.000	0.000	0.000	0.000	0.000
05.Nov.17	0	0.000	0.000	0.000	0.000	0.000	0.000	0.000	0.000	0.000	0.000
06.Nov.17	0	0.000	0.000	0.000	0.000	0.000	0.000	0.000	0.000	0.000	0.000
07.Nov.17	0	0.000	0.000	0.000	0.000	0.000	0.000	0.000	0.008	0.000	0.000
08.Nov.17	0	0.000	0.000	0.000	0.000	0.000	0.000	0.000	0.000	0.000	0.000
09.Nov.17	0	0.000	0.000	0.000	0.000	0.000	0.000	0.000	0.000	0.000	0.000
10.Nov.17	0	0.000	0.000	0.000	0.000	0.000	0.000	0.000	0.000	0.000	0.000
11.Nov.17	0	0.000	0.000	0.000	0.000	0.000	0.000	0.000	0.000	0.000	0.000
12.Nov.17	0	0.000	0.000	0.000	0.000	0.000	0.000	0.000	0.000	0.000	0.000
13.Nov.17	0	0.000	0.000	0.000	0.000	0.000	0.000	0.000	0.000	0.000	0.000
14.Nov.17	0	0.000	0.000	0.000	0.000	0.000	0.000	0.000	0.000	0.000	0.000
15.Nov.17	0	0.000	0.000	0.000	0.000	0.000	0.000	0.000	0.000	0.000	0.000
16.Nov.17	0	0.000	0.000	0.000	0.000	0.000	0.000	0.000	0.000	0.000	0.000
17.Nov.17	0	0.000	0.000	0.000	0.000	0.000	0.000	0.000	0.000	0.000	0.000
18.Nov.17	0	0.000	0.000	0.000	0.000	0.000	0.000	0.000	0.000	0.000	0.000
19.Nov.17	0	0.000	0.000	0.000	0.000	0.000	0.000	0.000	0.000	0.000	0.000
20.Nov.17	0	0.000	0.000	0.000	0.000	0.000	0.000	0.000	0.000	0.000	0.000
21.Nov.17	0	0.000	0.000	0.000	0.000	0.000	0.000	0.000	0.000	0.000	0.000
22.Nov.17	0	0.000	0.000	0.000	0.000	0.000	0.000	0.000	0.000	0.000	0.000
23.Nov.17	0	0.000	0.000	0.000	0.000	0.000	0.000	0.000	0.000	0.000	0.000
24.Nov.17	0	0.000	0.000	0.000	0.000	0.000	0.000	0.000	0.000	0.000	0.000
25.Nov.17	0	0.000	0.000	0.0001	0.000	0.000	0.000	0.000	0.000	0.000	0.000
26.Nov.17	0	0.000	0.000	0.000	0.000	0.000	0.000	0.000	0.000	0.000	0.000
27.Nov.17	0	0.000	0.000	0.000	0.000	0.000	0.000	0.000	0.000	0.000	0.000
28.Nov.17	0	0.000	0.000	0.000	0.000	0.000	0.000	0.000	0.000	0.000	0.000
29.Nov.17	0	0.000	0.000	0.000	0.000	0.000	0.000	0.000	0.000	0.000	0.000
30.Nov.17	0	0.000	0.000	0.000	0.000	0.000	0.000	0.000	0.000	0.000	0.000
TOTAL	0	0.000	0.000	0.000	0.000	0.000	0.000	0.000	0.008	0.000	0.000

ALL FIGURES IN MUs

Date	Shedding due to Transmission/Grid Constraints in Central Sector Stations / TTC / ATC VOILATION				DUE TO NEW GRID CODE REGULATION DEVIATION			Shedding due to Transmission/Grid Constraints in Central sector stations				Total	Total shedding due to grid restrictions
	BSES		NDPL	NDMC	BSES		TPDDL	BSES		TPDDL	NDMC		
	BYPL	BRPL			BYPL	BRPL		BYPL	BRPL				
	13	14	15	16	17	18	19	20	21	22	23	24=8 to 23	25=7+24
01.Nov.17	0.000	0.000	0.000	0.000	0.000	0.000	0.000	0.000	0.000	0.000	0.000	0.000	0.000
02.Nov.17	0.000	0.000	0.000	0.000	0.000	0.000	0.000	0.000	0.000	0.000	0.000	0.000	0.000
03.Nov.17	0.000	0.000	0.000	0.000	0.000	0.000	0.000	0.000	0.000	0.000	0.000	0.000	0.000
04.Nov.17	0.000	0.000	0.000	0.000	0.000	0.000	0.000	0.000	0.000	0.000	0.000	0.000	0.000
05.Nov.17	0.000	0.000	0.000	0.000	0.000	0.000	0.000	0.000	0.000	0.000	0.000	0.000	0.000
06.Nov.17	0.000	0.000	0.000	0.000	0.000	0.000	0.000	0.000	0.000	0.000	0.000	0.000	0.000
07.Nov.17	0.000	0.000	0.000	0.000	0.000	0.000	0.000	0.000	0.000	0.000	0.000	0.008	0.008
08.Nov.17	0.000	0.000	0.000	0.000	0.000	0.000	0.000	0.000	0.000	0.000	0.000	0.000	0.000
09.Nov.17	0.000	0.000	0.000	0.000	0.000	0.000	0.000	0.000	0.000	0.000	0.000	0.000	0.000
10.Nov.17	0.000	0.000	0.000	0.000	0.000	0.000	0.000	0.000	0.000	0.000	0.000	0.000	0.000
11.Nov.17	0.000	0.000	0.000	0.000	0.000	0.000	0.000	0.000	0.000	0.000	0.000	0.000	0.000
12.Nov.17	0.000	0.000	0.000	0.000	0.000	0.000	0.000	0.000	0.000	0.000	0.000	0.000	0.000
13.Nov.17	0.000	0.000	0.000	0.000	0.000	0.000	0.000	0.000	0.000	0.000	0.000	0.000	0.000
14.Nov.17	0.000	0.000	0.000	0.000	0.000	0.000	0.000	0.000	0.000	0.000	0.000	0.000	0.000
15.Nov.17	0.000	0.000	0.000	0.000	0.000	0.000	0.000	0.000	0.000	0.000	0.000	0.000	0.000
16.Nov.17	0.000	0.000	0.000	0.000	0.000	0.000	0.000	0.000	0.000	0.000	0.000	0.000	0.000
17.Nov.17	0.000	0.000	0.000	0.000	0.000	0.000	0.000	0.000	0.000	0.000	0.000	0.000	0.000
18.Nov.17	0.000	0.000	0.000	0.000	0.000	0.000	0.000	0.000	0.000	0.000	0.000	0.000	0.000
19.Nov.17	0.000	0.000	0.000	0.000	0.000	0.000	0.000	0.000	0.000	0.000	0.000	0.000	0.000
20.Nov.17	0.000	0.000	0.000	0.000	0.000	0.000	0.000	0.000	0.000	0.000	0.000	0.000	0.000
21.Nov.17	0.000	0.000	0.000	0.000	0.000	0.000	0.000	0.000	0.000	0.000	0.000	0.000	0.000
22.Nov.17	0.000	0.000	0.000	0.000	0.000	0.000	0.000	0.000	0.000	0.000	0.000	0.000	0.000
23.Nov.17	0.000	0.000	0.000	0.000	0.000	0.000	0.000	0.000	0.000	0.000	0.000	0.000	0.000
24.Nov.17	0.000	0.000	0.000	0.000	0.000	0.000	0.000	0.000	0.000	0.000	0.000	0.000	0.000
25.Nov.17	0.000	0.000	0.000	0.000	0.000	0.000	0.000	0.000	0.000	0.000	0.000	0.000	0.000
26.Nov.17	0.000	0.000	0.000	0.000	0.000	0.000	0.000	0.000	0.000	0.000	0.000	0.000	0.000
27.Nov.17	0.000	0.000	0.000	0.000	0.000	0.000	0.000	0.000	0.000	0.000	0.000	0.000	0.000
28.Nov.17	0.000	0.000	0.000	0.000	0.000	0.000	0.000	0.000	0.000	0.000	0.000	0.000	0.000
29.Nov.17	0.000	0.000	0.000	0.000	0.000	0.000	0.000	0.000	0.000	0.000	0.000	0.000	0.000
30.Nov.17	0.000	0.000	0.000	0.000	0.000	0.000	0.000	0.000	0.000	0.000	0.000	0.000	0.000
TOTAL	0.000	0.000	0.000	0.000	0.000	0.000	0.000	0.000	0.000	0.000	0.000	0.008	0.008

Date	DUE TO T&D CONSTRAINTS IN DELHI SYSTEM								
	DTL					DISCOMS			
	BSES		NDPL	NDMC	MES	BSES		NDPL	NDMC
	BYPL	BRPL				BYPL	BRPL		
26	27	28	29	30	31	32	33	34	
01.Nov.17	0.000	0.000	0.000	0.000	0.000	0.000	0.122	0.000	0.000
02.Nov.17	0.000	0.000	0.000	0.000	0.000	0.000	0.007	0.000	0.000
03.Nov.17	0.000	0.000	0.000	0.000	0.000	0.000	0.002	0.000	0.000
04.Nov.17	0.000	0.000	0.002	0.000	0.000	0.000	0.000	0.000	0.000
05.Nov.17	0.000	0.000	0.000	0.000	0.000	0.000	0.001	0.000	0.000
06.Nov.17	0.000	0.000	0.000	0.000	0.000	0.000	0.000	0.001	0.000
07.Nov.17	0.000	0.010	0.003	0.000	0.000	0.000	0.000	0.000	0.000
08.Nov.17	0.000	0.021	0.005	0.000	0.000	0.000	0.053	0.000	0.000
09.Nov.17	0.000	0.000	0.000	0.000	0.000	0.000	0.001	0.000	0.000
10.Nov.17	0.000	0.000	0.000	0.000	0.000	0.000	0.000	0.005	0.000
11.Nov.17	0.000	0.011	0.002	0.000	0.000	0.000	0.000	0.000	0.000
12.Nov.17	0.000	0.000	0.000	0.000	0.000	0.000	0.000	0.005	0.000
13.Nov.17	0.000	0.000	0.000	0.000	0.000	0.000	0.000	0.000	0.000
14.Nov.17	0.000	0.000	0.000	0.000	0.000	0.000	0.000	0.001	0.000
15.Nov.17	0.000	0.000	0.000	0.000	0.000	0.000	0.006	0.000	0.000
16.Nov.17	0.000	0.021	0.000	0.000	0.000	0.000	0.035	0.000	0.000
17.Nov.17	0.000	0.000	0.000	0.000	0.000	0.000	0.013	0.000	0.000
18.Nov.17	0.000	0.000	0.000	0.000	0.000	0.000	0.010	0.000	0.000
19.Nov.17	0.000	0.000	0.000	0.000	0.000	0.000	0.007	0.002	0.000
20.Nov.17	0.000	0.000	0.000	0.000	0.000	0.000	0.014	0.005	0.000
21.Nov.17	0.000	0.000	0.004	0.000	0.000	0.002	0.012	0.000	0.000
22.Nov.17	0.000	0.010	0.001	0.000	0.000	0.000	0.016	0.001	0.000
23.Nov.17	0.000	0.006	0.000	0.000	0.000	0.000	0.005	0.000	0.000
24.Nov.17	0.000	0.000	0.000	0.000	0.000	0.000	0.006	0.000	0.000
25.Nov.17	0.000	0.000	0.000	0.000	0.000	0.000	0.009	0.001	0.000
26.Nov.17	0.011	0.004	0.001	0.000	0.000	0.000	0.012	0.000	0.000
27.Nov.17	0.000	0.000	0.000	0.000	0.000	0.031	0.004	0.003	0.000
28.Nov.17	0.000	0.000	0.000	0.000	0.000	0.000	0.009	0.000	0.000
29.Nov.17	0.000	0.016	0.015	0.000	0.000	0.000	0.000	0.001	0.000
30.Nov.17	0.000	0.001	0.000	0.000	0.000	0.002	0.002	0.000	0.000
TOTAL	0.011	0.100	0.033	0.000	0.000	0.035	0.346	0.025	0.000

ALL FIGURES IN MU_s

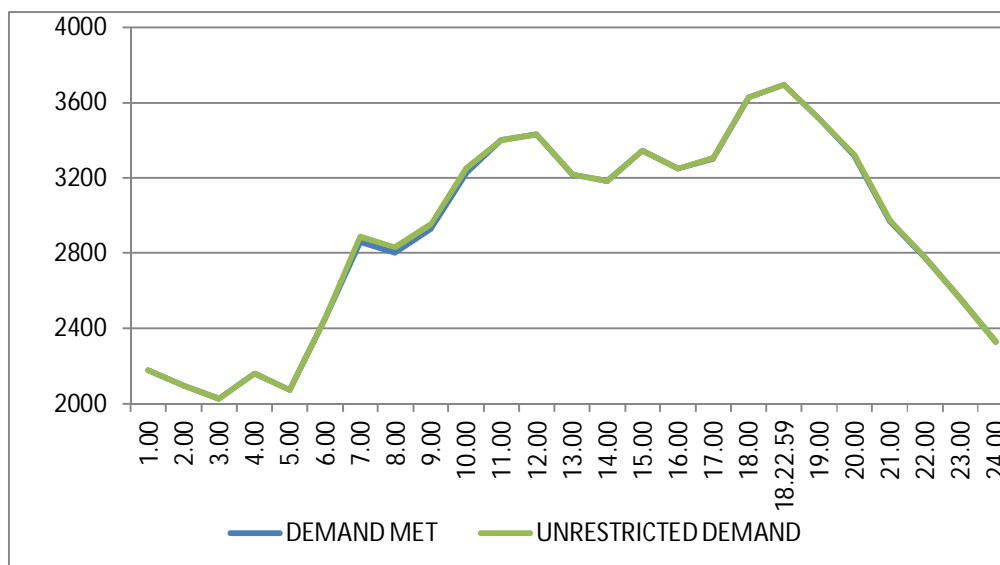
DATE	OTHER AGENCIES LIKE GENCO, BBMB, BTPS ETC.				THEFT PRONE SHEDDING			TOTAL SHEDDING DUE TO T&D CONSTS. & THEFT PRONE	GRAND TOTAL
	BSES		NDPL	NDMC	BSES		NDPL		
	BYPL	BRPL			BYPL	BRPL			
1	35	36	37	38	39	40	41	42= 26 to 41	43 = 25 + 42
01.Nov.17	0.000	0.000	0.000	0.000	0.000	0.000	0.000	0.122	0.122
02.Nov.17	0.000	0.000	0.000	0.000	0.000	0.000	0.000	0.007	0.007
03.Nov.17	0.000	0.000	0.000	0.000	0.000	0.000	0.000	0.002	0.002
04.Nov.17	0.000	0.000	0.000	0.000	0.000	0.000	0.000	0.002	0.002
05.Nov.17	0.000	0.000	0.000	0.000	0.000	0.000	0.000	0.001	0.001
06.Nov.17	0.000	0.000	0.000	0.000	0.000	0.000	0.000	0.001	0.001
07.Nov.17	0.000	0.000	0.000	0.000	0.000	0.000	0.000	0.013	0.021
08.Nov.17	0.000	0.000	0.000	0.000	0.000	0.000	0.000	0.079	0.079
09.Nov.17	0.000	0.000	0.000	0.000	0.000	0.000	0.000	0.001	0.001
10.Nov.17	0.000	0.000	0.000	0.000	0.000	0.000	0.000	0.005	0.005
11.Nov.17	0.000	0.000	0.000	0.000	0.000	0.000	0.000	0.013	0.013
12.Nov.17	0.000	0.000	0.000	0.000	0.000	0.000	0.000	0.005	0.005
13.Nov.17	0.000	0.000	0.000	0.000	0.000	0.000	0.000	0.000	0.000
14.Nov.17	0.000	0.000	0.000	0.000	0.000	0.000	0.000	0.001	0.001
15.Nov.17	0.000	0.000	0.000	0.000	0.000	0.000	0.000	0.006	0.006
16.Nov.17	0.000	0.000	0.000	0.000	0.000	0.000	0.000	0.056	0.056
17.Nov.17	0.000	0.000	0.000	0.000	0.000	0.000	0.000	0.013	0.013
18.Nov.17	0.000	0.000	0.000	0.000	0.000	0.000	0.000	0.010	0.010
19.Nov.17	0.000	0.000	0.002	0.000	0.000	0.000	0.000	0.011	0.011
20.Nov.17	0.000	0.000	0.000	0.000	0.000	0.000	0.000	0.019	0.019
21.Nov.17	0.000	0.000	0.000	0.000	0.000	0.000	0.000	0.018	0.018
22.Nov.17	0.000	0.000	0.000	0.000	0.000	0.000	0.000	0.028	0.028
23.Nov.17	0.000	0.000	0.000	0.000	0.000	0.000	0.000	0.011	0.011
24.Nov.17	0.000	0.000	0.000	0.000	0.000	0.000	0.000	0.006	0.006
25.Nov.17	0.000	0.000	0.000	0.000	0.000	0.000	0.000	0.010	0.010
26.Nov.17	0.000	0.000	0.000	0.000	0.000	0.000	0.000	0.028	0.028
27.Nov.17	0.000	0.000	0.000	0.000	0.000	0.000	0.000	0.038	0.038
28.Nov.17	0.000	0.000	0.000	0.000	0.000	0.000	0.000	0.009	0.009
29.Nov.17	0.000	0.000	0.000	0.000	0.000	0.000	0.000	0.032	0.032
30.Nov.17	0.000	0.000	0.000	0.000	0.000	0.000	0.000	0.005	0.005
TOTAL	0.000	0.000	0.002	0.000	0.000	0.000	0.000	0.552	0.560

DATE	(NET CONS.)	MAXI. DEMAND MET DURING THE DAY	TIME OF OCCURRENCE OF MAX DEMAND	SHEDDING AT THIS TIME	UN-RESTRICTED DEMAND	MAXIMUM UN-RESTRICTED DEMAND DURING THE DAY	TIME OF MAX. UN-REST. DEMAND	DEMAND AT THAT TIME	SHEDDING AT THAT TIME
	In Mus.	IN MW	IN HRS.	IN MW	IN MW	IN MW	HRS.	IN MW	IN MW
1	32	33	34	35	36=33+35	37=39+40	38	39	40
01.Nov.17	69.990	3695	18:22:59	0	3695	3695	18:22:59	3695	0
02.Nov.17	69.877	3690	18:01:39	0	3690	3690	18:01:39	3690	0
03.Nov.17	71.967	3681	18:27:35	0	3681	3681	18:27:35	3681	0
04.Nov.17	65.174	3361	18:31:13	0	3361	3361	18:31:13	3361	0
05.Nov.17	62.430	3226	11:05:45	0	3226	3226	11:05:45	3226	0
06.Nov.17	67.392	3527	18:08:54	0	3527	3527	18:08:54	3527	0
07.Nov.17	66.174	3499	18:17:53	0	3499	3499	18:17:53	3499	0
08.Nov.17	65.896	3545	17:50:49	0	3545	3545	17:50:49	3545	0
09.Nov.17	64.848	3524	10:55:05	0	3524	3524	10:55:05	3524	0
10.Nov.17	64.989	3601	10:27:39	0	3601	3601	10:27:39	3601	0
11.Nov.17	60.498	3358	10:55:19	0	3358	3358	10:55:19	3358	0
12.Nov.17	57.314	3206	11:03:56	0	3206	3206	11:03:56	3206	0
13.Nov.17	63.134	3361	10:16:00	0	3361	3361	10:16:00	3361	0
14.Nov.17	63.626	3390	10:11:45	0	3390	3390	10:11:45	3390	0
15.Nov.17	64.218	3370	10:23:20	0	3370	3370	10:23:20	3370	0
16.Nov.17	63.324	3392	10:09:28	0	3392	3392	10:09:28	3392	0
17.Nov.17	64.854	3491	10:15:47	0	3491	3491	10:15:47	3491	0
18.Nov.17	60.787	3305	10:16:09	0	3305	3305	10:16:09	3305	0
19.Nov.17	58.417	3435	10:10:57	0	3435	3435	10:10:57	3435	0
20.Nov.17	60.002	3319	10:17:23	0	3319	3319	10:17:23	3319	0
21.Nov.17	60.080	3352	10:23:21	0	3352	3352	10:23:21	3352	0
22.Nov.17	62.502	3398	10:19	0	3398	3398	10:19	3398	0
23.Nov.17	63.003	3531	10:03:20	0	3531	3531	10:03:20	3531	0
24.Nov.17	62.419	3550	10:31:33	0	3550	3550	10:31:33	3550	0
25.Nov.17	60.260	3355	10:31:26	0	3355	3355	10:31:26	3355	0
26.Nov.17	57.508	3403	10:39:41	0	3403	3403	10:39:41	3403	0
27.Nov.17	60.980	3438	10:16:09	0	3438	3438	10:16:09	3438	0
28.Nov.17	61.269	3320	10:09:27	0	3320	3320	10:09:27	3320	0
29.Nov.17	62.544	3465	10:31:30	0	3465	3465	10:31:30	3465	0
30.Nov.17	61.228	3530	10:25:03	0	3530	3530	10:25:03	3530	0
TOTAL	1896.704	3695 01.11.17	18:22:59	0	3695 01.11.17	3695	18:22:59	3695	0

10 **LOAD PATTERN OF DELHI ON THE DAY OF PEAK DEMAND MET DURING NOVEMBER 2017 ON 01.11.2017- 3695MW AT 18.22.59HRS.**

All figures in MW

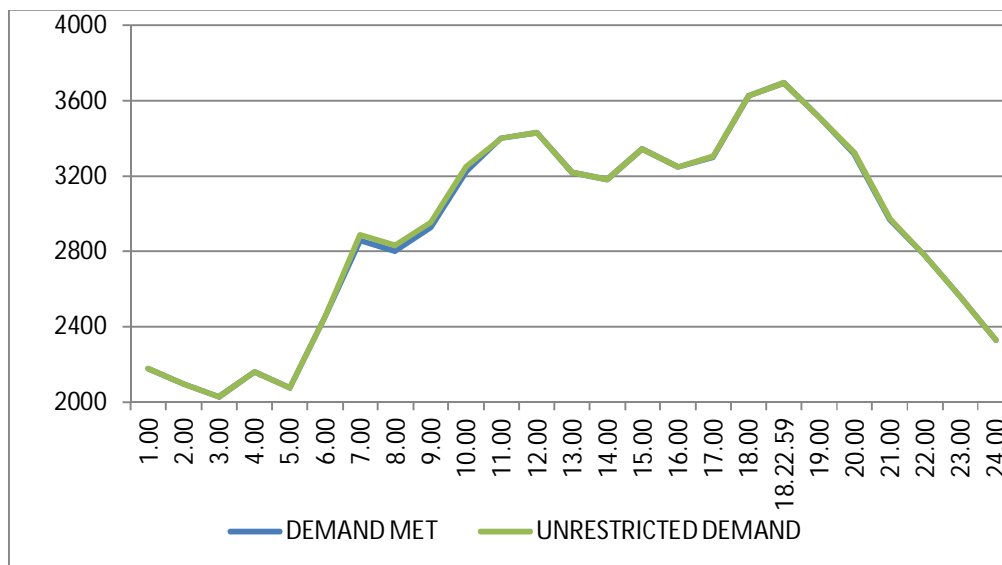
Hrs.	Demand	Load Shedding	Un-Restricted Demand
1.00	2179	0	2179
2.00	2096	0	2096
3.00	2028	0	2028
4.00	2160	0	2160
5.00	2072	0	2072
6.00	2450	0	2450
7.00	2859	29	2888
8.00	2801	29	2830
9.00	2926	29	2955
10.00	3224	29	3253
11.00	3401	0	3401
12.00	3431	0	3431
13.00	3217	0	3217
14.00	3182	0	3182
15.00	3346	0	3346
16.00	3250	0	3250
17.00	3302	2	3304
18.00	3627	0	3627
18.22.59	3695	0	3695
19.00	3513	0	3513
20.00	3319	7	3326
21.00	2966	7	2973
22.00	2778	0	2778
23.00	2561	0	2561
24.00	2328	0	2328
Total (IN MUS)	69.990	0.122	70.112



11 LOAD PATTERN OF DELHI ON THE DAY OF MAXIMUM UN-RESTRICTED DEMAND DURING NOVEMBER 2017 ON 01.11.2017-3695MW AT 18.22.59HRS.

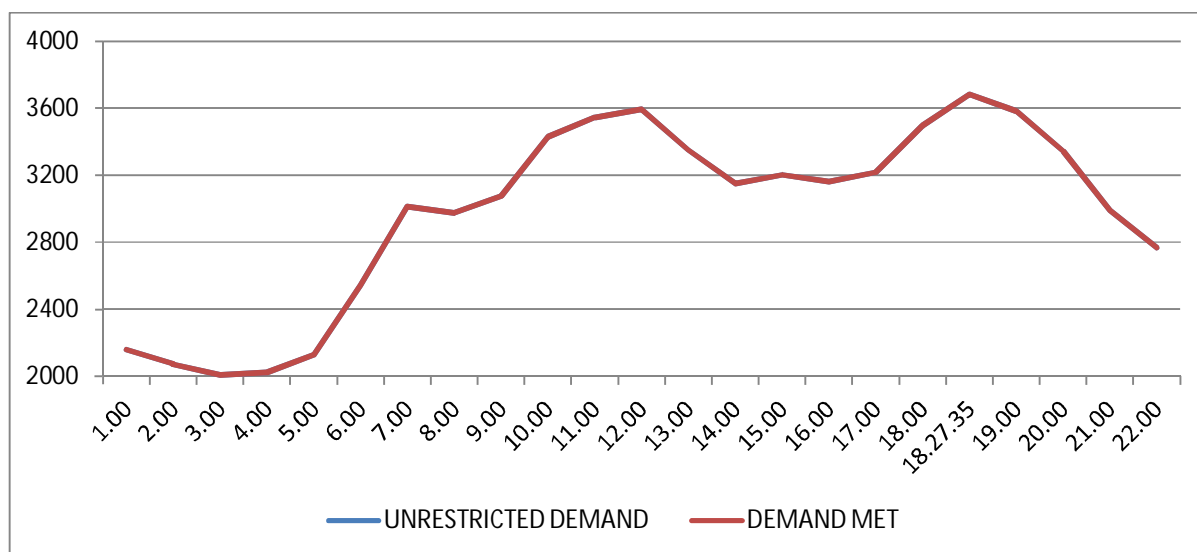
All figures in MW

Hrs.	Demand	Load Shedding	Un-Restricted Demand
1.00	2179	0	2179
2.00	2096	0	2096
3.00	2028	0	2028
4.00	2160	0	2160
5.00	2072	0	2072
6.00	2450	0	2450
7.00	2859	29	2888
8.00	2801	29	2830
9.00	2926	29	2955
10.00	3224	29	3253
11.00	3401	0	3401
12.00	3431	0	3431
13.00	3217	0	3217
14.00	3182	0	3182
15.00	3346	0	3346
16.00	3250	0	3250
17.00	3302	2	3304
18.00	3627	0	3627
18.22.59	3695	0	3695
19.00	3513	0	3513
20.00	3319	7	3326
21.00	2966	7	2973
22.00	2778	0	2778
23.00	2561	0	2561
24.00	2328	0	2328
Total (IN MUS)	69.990	0.122	70.112



**12 LOAD PATTERN OF DELHI ON THE DAY OF MAXIMUM ENERGY CONSUMED
DURING NOVEMBER 2017 – 03.11.2017 – 71.967Mus All figures in MW**

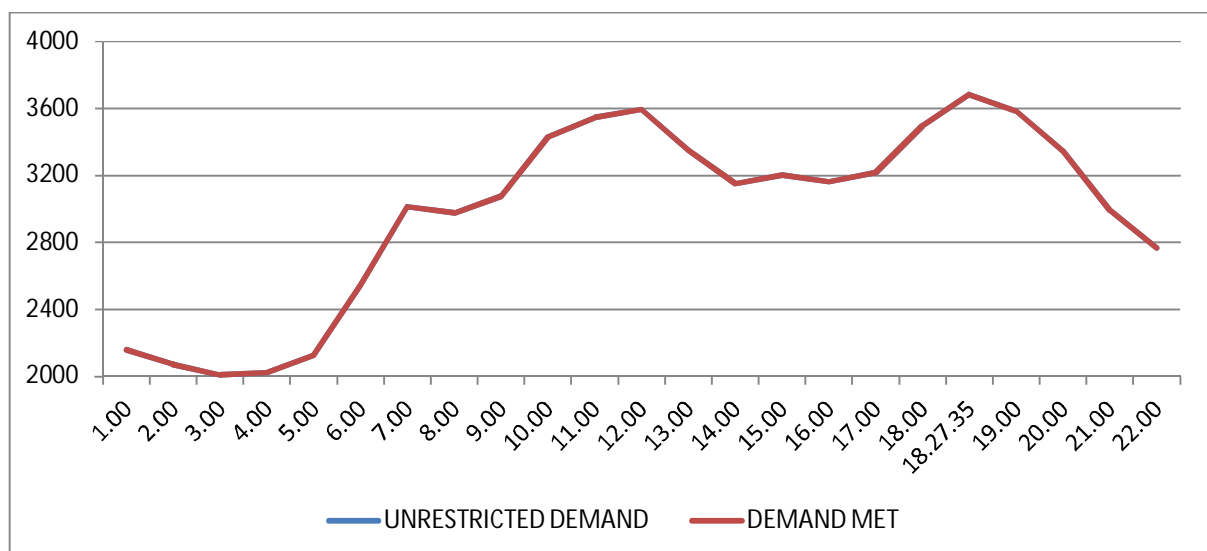
Hrs.	Demand	Load Shedding	Un-Restricted Demand
1.00	2161	0	2161
2.00	2073	0	2073
3.00	2010	0	2010
4.00	2024	0	2024
5.00	2129	0	2129
6.00	2544	0	2544
7.00	3014	0	3014
8.00	2976	0	2976
9.00	3077	0	3077
10.00	3428	0	3428
11.00	3544	0	3544
12.00	3595	0	3595
13.00	3353	0	3353
14.00	3149	0	3149
15.00	3202	0	3202
16.00	3161	0	3161
17.00	3217	0	3217
18.00	3498	0	3498
18.27.35	3681	0	3681
19.00	3584	0	3584
20.00	3345	0	3345
21.00	2989	0	2989
22.00	2768	0	2768
23.00	2561	0	2561
24.00	2343	0	2343
Total (IN MUS)			



13 LOAD PATTERN OF DELHI ON THE DAY OF MAXIMUM UNRESTRICTED ENERGY DEMAND DURING NOVEMBER 2017 – 06.06.2017 – 137.148 Mus

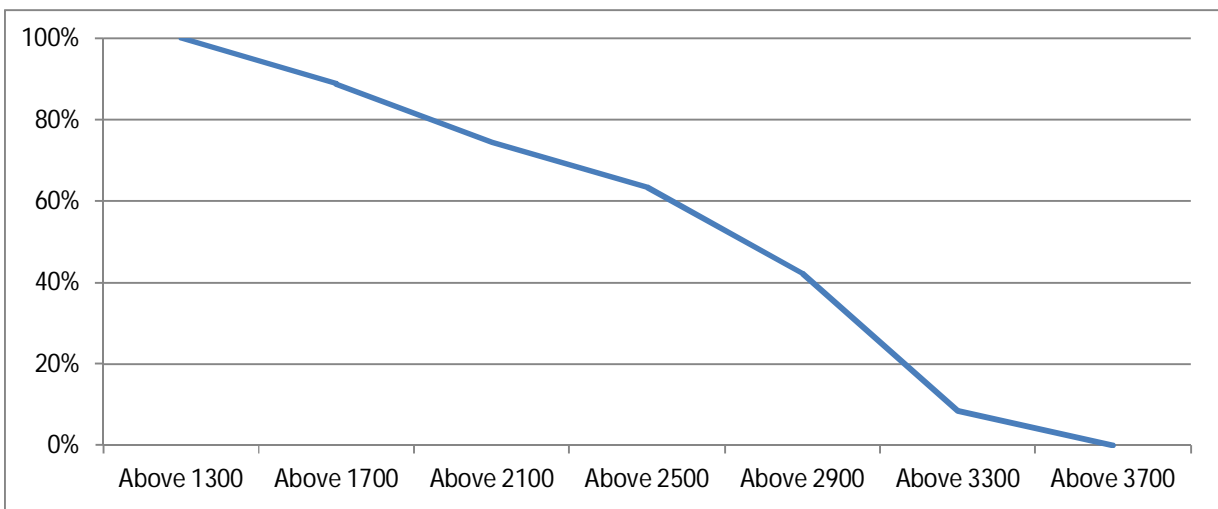
All figures in MW

Hrs.	Demand	Load Shedding	Un-Restricted Demand
1.00	2161	0	2161
2.00	2073	0	2073
3.00	2010	0	2010
4.00	2024	0	2024
5.00	2129	0	2129
6.00	2544	0	2544
7.00	3014	0	3014
8.00	2976	0	2976
9.00	3077	0	3077
10.00	3428	0	3428
11.00	3544	0	3544
12.00	3595	0	3595
13.00	3353	0	3353
14.00	3149	0	3149
15.00	3202	0	3202
16.00	3161	0	3161
17.00	3217	0	3217
18.00	3498	0	3498
18.27.35	3681	0	3681
19.00	3584	0	3584
20.00	3345	0	3345
21.00	2989	0	2989
22.00	2768	0	2768
23.00	2561	0	2561
24.00	2343	0	2343
Total (IN MUS)			



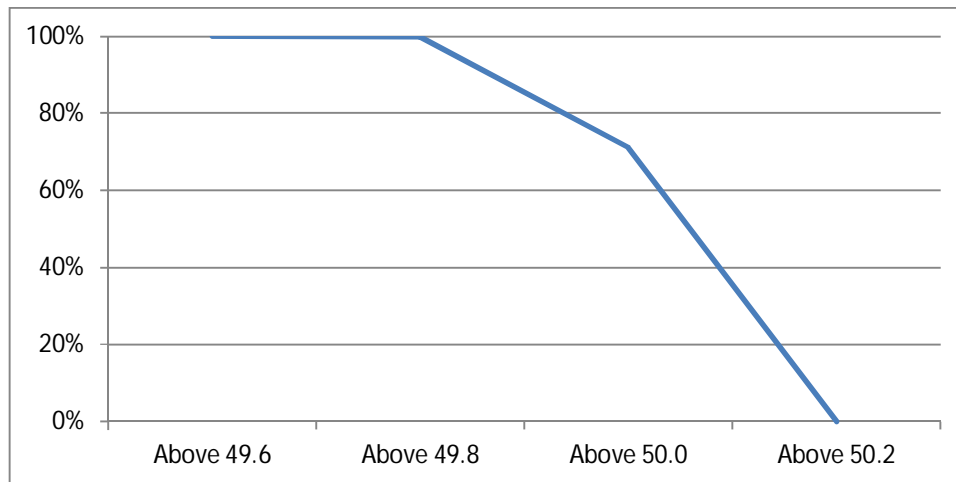
14 LOAD DURATION CURVE FOR NOVEMBER 2017

Load in MW	Percentage of Time
Above 1300	100%
Above 1700	88.85%
Above 2100	74.44%
Above 2500	63.37%
Above 2900	42.18%
Above 3300	8.47%
Above 3700	0.00%



FREQUENCY ANALYSIS FOR THE MONTH OF NOVEMBER 2017

Frequency Range in Hz.	Percentage of time
Above 49.6	100.00
Above 49.8	99.86
Above 50.00	71.15
Above 50.20	00.03



16 VOLTAGE PROFILE OF 220 KV SUB-STATIONS IN DELHI DURING NOVEMBER 2017

All figures in kV

Date	NARELA		GAZIPUR	
	Max	Min	Max	Min
01.Nov.17	237.81	226.98	239.49	228.79
02.Nov.17	236.91	226.72	238.97	228.01
03.Nov.17	236.65	227.50	239.75	229.82
04.Nov.17	237.56	226.08	240.78	230.72
05.Nov.17	236.65	229.95	240.26	231.88
06.Nov.17	237.04	227.63	240.14	231.75
07.Nov.17	237.30	228.27	239.10	--
08.Nov.17	239.62	228.14	238.59	228.01
09.Nov.17	237.17	227.37	237.17	227.37
10.Nov.17	237.17	228.01	237.94	228.66
11.Nov.17	238.33	228.66	239.23	232.14
12.Nov.17	237.30	228.27	232.78	232.78
13.Nov.17	239.75	228.01	232.78	232.78
14.Nov.17	236.33	227.63	240.78	231.75
15.Nov.17	238.85	228.53	240.39	232.14
16.Nov.17	237.04	228.79	239.75	232.66
17.Nov.17	237.81	227.50	240.91	231.75
18.Nov.17	239.23	228.92	242.07	234.33
19.Nov.17	238.85	226.98	241.43	231.49
20.Nov.17	239.75	228.27	242.46	233.95
21.Nov.17	240.14	230.21	241.81	233.95
22.Nov.17	240.39	231.11	242.33	232.66
23.Nov.17	240.52	230.21	242.84	234.33
24.Nov.17	239.88	230.21	242.97	184.81
25.Nov.17	240.26	231.37	243.10	232.66
26.Nov.17	242.97	231.49	203.74	--
27.Nov.17	239.62	229.43	240.26	233.95
28.Nov.17	240.52	230.08	240.26	231.75
29.Nov.17	240.39	230.59	242.97	230.72
30.Nov.17	241.55	230.08	243.10	230.59

17 VOLTAGE PROFILE OF 400 KV SUB-STATIONS IN DELHI DURING NOVEMBER 2017

All figures in kV

Date	400kV Bamnauli Grid Sub-Station				
	Max KV	Max Time	Min KV	Min Time	Average KV
01.Nov.17	417.15	04.00	401.68	18.11	410.56
02.Nov.17	415.74	04.01	399.33	18.08	407.93
03.Nov.17	415.51	20.45	400.97	09.19	408.63
04.Nov.17	416.68	04.01	400.27	09.37	408.70
05.Nov.17	417.15	19.56	406.37	00.04	410.87
06.Nov.17	417.86	04.02	402.14	09.53	410.54
07.Nov.17	416.68	04.01	401.68	18.13	409.49
08.Nov.17	417.86	20.13	400.27	11.06	408.94
09.Nov.17	417.86	05.01	400.74	09.28	410.51
10.Nov.17	416.92	05.03	403.08	11.20	409.78
11.Nov.17	420.20	04.01	404.02	12.25	411.40
12.Nov.17	418.32	20.56	404.02	12.48	411.74
13.Nov.17	421.61	04.00	404.02	18.14	412.69
14.Nov.17	419.26	04.02	402.14	18.19	411.08
15.Nov.17	419.73	21.55	--	10.38	296.49
16.Nov.17	421.61	02.02	404.01	18.07	414.94
17.Nov.17	422.78	19.44	402.85	09.54	413.72
18.Nov.17	422.55	20.54	406.83	17.54	415.46
19.Nov.17	426.06	20.44	408.01	11.07	416.74
20.Nov.17	426.06	04.01	405.56	18.11	416.30
21.Nov.17	424.42	04.01	409.88	17.54	417.40
22.Nov.17	425.36	04.02	406.60	09.54	416.65
23.Nov.17	425.36	04.02	409.65	10.29	416.75
24.Nov.17	424.42	04.02	407.54	10.15	415.07
25.Nov.17	423.01	04.00	404.25	09.46	414.72
26.Nov.17	424.89	04.01	407.30	10.20	416.78
27.Nov.17	423.72	01.59	401.68	06.29	414.38
28.Nov.17	424.19	04.01	4506.13	06.38	414.39
29.Nov.17	424.19	04.03	406383	09.24	415.18
30.Nov.17	424.19	04.00	405.19	10.10	414.39

All figures in kV

Date	400kV Bawana Grid Sub-Station				
	Max KV	Max Time	Min KV	Min Time	Average KV
01.Nov.17	422.55	03.00	407.30	18.12	416.16
02.Nov.17	420.67	03.01	406.60	12.21	412.92
03.Nov.17	421.61	20.45	407.30	18.12	412.43
04.Nov.17	423.72	04.01	398.18	16.01	415.90
05.Nov.17	421.61	19.56	409.18	18.10	416.30
06.Nov.17	421.84	04.02	407.30	18.23	414.91
07.Nov.17	422.08	04.02	406.60	18.13	415.71
08.Nov.17	424.19	04.01	406.83	12.25	415.85
09.Nov.17	423.01	05.01	407.77	10.47	416.56
10.Nov.17	423.72	03.25	408.71	18.12	416.31
11.Nov.17	425.59	04.00	409.88	12.40	417.88
12.Nov.17	424.89	20.55	409.88	12.49	418.12
13.Nov.17	428.41	04.01	408.48	18.20	419.76
14.Nov.17	425.12	04.00	408.01	18.09	417.99
15.Nov.17	425.59	39.59	409.65	18.13	418.14
16.Nov.17	423.25	00.36	409.18	18.08	417.66
17.Nov.17	425.59	21.56	407.54	11.25	416.45
18.Nov.17	426.53	03.59	409.88	18.10	419.57
19.Nov.17	427.23	23.58	411.29	18.10	420.95
20.Nov.17	427.47	03.58	407.54	18.12	419.53
21.Nov.17	426.77	04.00	409.65	18.09	419.65
22.Nov.17	427.23	04.01	411.99	09.55	419.03
23.Nov.17	426.77	02.45	408.71	18.09	417.77
24.Nov.17	423.72	04.03	408.48	18.09	416.03
25.Nov.17	423.72	23.59	410.12	09.42	416.68
26.Nov.17	425.59	04.00	409.88	09.43	418.01
27.Nov.17	423.72	01.59	406.37	18.08	415.82
28.Nov.17	424.42	04.04	406.83	18.10	414.58
29.Nov.17	424.19	04.02	407.77	18.13	416.94
30.Nov.17	424.42	04.00	408.71	10.11	416.84

18 DETAILS OF LUMPED CAPACITORS AT NEAREST 220 KV SUBSTATION

SI. No	SUB-STATION	INSTALLED CAPACITY			
		66KV	33kV	11kV	TOTAL
1	IP YARD		30.00		30.00
1	Kamla Market			16.35	16.35
2	Minto Road				0.00
3	GB Pant Hosp			10.48	10.48
4	Delhi Gate			16.30	16.30
5	Tilakmarg			5.04	5.04
7	Cannaught Place			10.08	10.08
8	Kilokri		10.08	10.48	20.56
9	NDSE-II				0.00
11	Nizamuddin				0.00
12	Exhibition-I				0.00
13	Exhibition-II				0.00
14	Defence Colony				0.00
15	IG Stadium		10.08	5.45	15.53
16	Lajpat Nagar				0.00
17	IP Estate			10.90	10.90
18	D.D.U.Marg			21.60	21.60
		0.00	50.16	106.68	156.84
2	Electric Lane				
1	Electric Lane			5.04	5.04
2	Scindia House			10.44	10.44
3	Mandi House			10.80	10.80
4	Raisina Road			10.08	10.08
5	Raja Bazar			10.08	10.08
		0.00	0.00	46.44	46.44
3	RPH Station		20.00		20.00
1	Lahori Gate			10.49	10.49
2	Jama Masjid			10.48	10.48
4	Kamla Market				0.00
5	Minto Road			10.90	10.90
6	GB Pant Hosp				0.00
7	IG Stadium				0.00
		0.00	20.00	31.87	51.87
4	Parkstreet S/stn	20.00	20.00		40.00
1	Shastri Park		0.00	5.45	5.45
2	Faiz Road			18.05	18.05
3	Motia Khan			16.30	16.30
4	Prasad Nagar			16.25	16.25
5	Anand Parbat			10.80	10.80
6	Shankar Road			10.44	10.44
7	Rama Road			0.00	0.00
8	Baird Road			10.08	10.08
9	Hanuman Road			10.08	10.08
10	Pusa			5.44	5.44
11	Ridge Valley			0.00	0.00
12	B. D. Marg			5.40	5.40
13	Nirman Bhawan			5.04	5.04
		20.00	20.00	113.33	153.33
5	Naraina S/stn		20.00	5.04	25.04
1	DMS			10.85	10.85
2	Mayapuri		10.87	10.40	21.27
3	Inderpuri		13.26	5.04	18.30
4	Rewari line				0.00
5	Khyber Lane		10.05		10.05
6	Kirbi Place		10.05		10.05
7	Payal			10.08	10.08
8	A-21 Naraina			4.80	4.80
8	Saraswati Garden			10.08	10.08
		0.00	64.23	56.29	120.52

SI. No	SUB-STATION	INSTALLED CAPACITY			
		66KV	33kV	11kV	TOTAL
6	Mehrauli S/stn	80.00		5.04	85.04
1	Adchini			14.61	14.61
2	Andheria Bagh			10.85	10.85
3	IIT			10.90	10.90
4	JNU		10.03	10.03	20.06
5	Bijwasan			15.47	15.47
6	DC Saket		10.08	9.98	20.06
7	Malviya Nagar				0.00
8	C Dot			17.68	17.68
9	Vasant kunj B-Blk	21.79		10.90	32.69
10	Vasant kunj C-Blk	20.16		10.48	30.64
11	Palam				0.00
12	IGNOU			14.54	14.54
13	R. K. Puram-I			10.07	10.07
14	Vasant Vihar			19.25	19.25
15	Pusp Vihar			10.44	10.44
16	Bhikaji Cama Place		10.08	10.07	20.15
		121.95	30.19	180.31	332.45
7	Vasantkunj S/stn	40.00		5.04	45.04
1	R. K. Puram-II			10.80	10.80
2	Vasant kunj C-Blk				0.00
3	Vasant kunj D-Blk			9.63	9.63
4	Ridge Valley				0.00
		40.00	0.00	25.47	65.47
8	Okhla S/stn	60.00	10.00	5.04	75.04
1	Balaji			10.80	10.80
2	East of Kailash			15.89	15.89
3	Alaknanda			16.30	16.30
4	Malviya Nagar	21.79	20.16	10.85	52.80
5	Masjid Moth			16.30	16.30
6	Nehru Place			21.34	21.34
7	Okhla Ph-I	21.79		16.30	38.09
8	Okhla Ph-II		20.93	15.47	36.40
9	Shivalik			10.80	10.80
10	Batra			15.90	15.90
11	VSNL			10.90	10.90
12	Siri Fort			10.49	10.49
13	Tuglakabad			18.05	18.05
		103.58	51.09	194.43	349.10
9	Lodhi Road S/stn			20.00	20.00
1	Defence Colony			14.85	14.85
2	Hudco			10.90	10.90
3	Lajpat Nagar			10.90	10.90
4	Nizamuddin			10.44	10.44
5	Vidyut Bhawan (Shahjahan Rd)			10.80	10.80
6	Ex. Gr. II			0.00	0.00
7	IHC			0.00	0.00
		0.00	0.00	77.89	77.89
10	Sarita Vihar S/stn	20.00		5.04	25.04
1	Sarita Vihar			10.07	10.07
2	MCIE			10.06	10.06
3	Mathura Road	20.16		11.69	31.85
4	Jamia Millia			10.89	10.89
5	Sarai Julena		10.08	16.29	26.37
6	Jasola			5.44	5.44
		40.16	10.08	69.48	119.72

SI. No	SUB-STATION	INSTALLED CAPACITY			
		66KV	33kV	11kV	TOTAL
11	Wazirabad				
1	Bhagirathi		14.40	18.10	32.50
2	Ghonda	0.00	22.56	15.94	38.50
3	Seelam Pur		10.08	21.39	31.47
4	Dwarkapuri			15.46	15.46
5	Nandnagri	20.16		16.35	36.51
6	Yamuna Vihar			14.40	14.40
7	East of Loni Road			18.00	18.00
8	Shastri Park			10.90	10.90
9	Karawal Nagar			5.40	5.40
10	Sonia Vihar			14.70	14.70
		20.16	47.04	150.64	217.84
12	Geeta Colony				
1	Geeta Colony			10.49	10.49
2	Kanti Nagar			18.10	18.10
3	Kailash Nagar			15.48	15.48
4	Seelam Pur				0.00
5	Shakar Pur			10.80	10.80
		0.00	0.00	54.87	54.87
13	Gazipur S/stn	40.00		5.04	45.04
1	Dallupura	0.00		10.90	10.90
2	Vivek Vihar			9.57	9.57
3	GT Road			10.85	10.85
4	Kondli	20.16		10.85	31.01
5	MVR-I			10.90	10.90
6	MVR-II	20.16		10.44	30.60
7	PPG Ind. Area			10.06	10.06
8	New Kondli			21.60	21.60
		80.32	0.00	100.21	180.53
14	Patparganj S/stn	40.00	20.00	5.04	65.04
1	GH-I	19.89		21.25	41.14
2	GH-II	20.09		10.90	30.99
3	CBD		10.03	15.48	25.51
4	Guru Angad Nagar			15.49	15.49
5	Karkadooma		10.80	10.44	21.24
6	Preet Vihar			10.07	10.07
7	CBD-II			10.80	10.80
8	Shakarpur				0.00
9	Jhilmil			10.80	10.80
10	Dilshad Garden	20.16		16.35	36.51
11	Khichripur	21.79		15.89	37.68
12	Mother Dairy				0.00
13	Scope Building				0.00
14	Vivek Vihar				0.00
15	Akhardham			14.60	14.60
		121.93	40.83	157.11	319.87
15	Najafgarh S/stn	60.00		5.04	65.04
1	A4 Paschim Vihar			10.80	10.80
2	Nangloi	21.73		15.84	37.57
3	Nangloi W/W	20.89		10.85	31.74
4	Pankha Road			15.88	15.88
5	Jaffarpur			26.23	26.23
7	Inst. Area Janakpuri (Sagarpur)			17.60	17.60
8	Paschimpuri		10.05	15.47	25.52
9	Paschim Vihar	41.83		15.43	57.26
10	Mukherjee Park			20.83	20.83
11	Udyog Nagar			10.43	10.43
12	Choukhandi			10.07	10.07
13	DJB Najafgarh			21.60	21.60
		144.45	10.05	196.07	350.57

Sl. No	SUB-STATION	INSTALLED CAPACITY			
		66KV	33kv	11kv	TOTAL
16	Pappankalan-I S/stn	20.00		5.04	25.04
1	Bindapur Grid G-3 PPK	21.73		15.85	37.58
2	Bodella-I	20.10		16.24	36.34
3	Bodella-II	21.73		17.64	39.37
4	DC Janakpuri			10.03	10.03
5	G-2 PPK (Nasirpur)			16.20	16.20
6	G-5 PPK (Matiala)			22.71	22.71
7	G-6 PPK			12.60	12.60
8	G-15 PPK			10.80	10.80
9	Harinagar	21.18		16.25	37.43
10	Rewari line			5.44	5.44
		104.74	0.00	148.80	253.54
17	BBMB Rohtak Road				
1	S.B. Mill			10.07	10.07
2	Rama Road			10.88	10.88
3	Ram Pura			10.48	10.48
4	Rohtak Road			10.08	10.08
5	Vishal			10.40	10.40
6	Madipur			10.43	10.43
7	Sudershan Park			10.08	10.08
8	Kirti Nagar			5.44	5.44
		0.00	0.00	77.86	77.86
18	Shalimarbagh S/stn		40.00	6.00	46.00
1	S.G.T. Nagar			5.44	5.44
2	Ashok Vihar			0.00	0.00
3	Haiderpur			11.39	11.39
4	SMB FC			12.64	12.64
5	Rani Bagh			5.44	5.44
6	SMB KHOSLA			5.44	5.44
		0.00	40.00	46.35	86.35
19	Subzimandi S/stn			6.00	6.00
1	Shakti Nagar			5.04	5.04
2	Gulabibagh			10.88	10.88
3	Shahzadabagh			15.79	15.79
4	DU			5.44	5.44
5	Tripolia			10.88	10.88
6	B. G. Road			5.40	5.40
		0.00	0.00	59.43	59.43
20	Narela S/stn	40.00		5.04	45.04
1	A-7 Narela			10.88	10.88
2	Azad Pur			5.44	5.44
3	Badli	20.00		5.95	25.95
4	DSIDC Narela-1			5.95	5.95
5	GTK			5.94	5.94
6	Jahangirpuri	20.00	10.00	0.00	30.00
7	Bhalswa			12.64	12.64
8	Pitampura-I	20.00		5.04	25.04
9	RG-1			5.44	5.44
		100.00	10.00	62.32	172.32

Sl. No	SUB-STATION	INSTALLED CAPACITY			
		66KV	33KV	11KV	TOTAL
21	Gopalpur S/stn		30.00	5.04	35.04
1	Hudson Lane			5.95	5.95
2	Wazirabad			7.20	7.20
3	Indra Vihar			5.95	5.95
4	DIFR			5.44	5.44
5	GTK Road			5.44	5.44
6	Jahangirpuri		10.00	5.95	15.95
7	Civil lines			7.20	7.20
8	Pitam Pura-3			5.44	5.44
9	SGT Nagar			13.15	13.15
10	Tiggipur			10.88	10.88
11	Model Town			14.40	14.40
12	Azad Pur			5.44	5.44
13	Dheerpur			14.40	14.40
		0.00	40.00	111.88	151.88
22	Rohini S/stn	40.00		6.00	46.00
1	Rohini Sec-22			18.08	18.08
2	Rohini Sec-24			5.44	5.44
3	Rohini-3			5.95	5.95
4	Rohini-4			11.39	11.39
5	Rohini-5			11.39	11.39
6	Rohini-6			0.00	0.00
7	Mangolpuri-2	20.00		7.20	27.20
8	Pitam Pura-1			5.44	5.44
9	Pitam Pura-2			10.48	10.48
10	Rohini DC-1			14.40	14.40
11	AIR Kham pur			11.90	11.90
		60.00	0.00	107.67	167.67
23	Kanjhawala S/stn	20.00		5.04	25.04
1	Bawana Clear Water			14.30	14.30
2	Pooth Khoord	20.00		5.44	25.44
4	Rohini -2			13.15	13.15
		40.00	0.00	37.93	77.93
24	BAWANA S/stn				
1	Bawana S/stn No. 6			10.88	10.88
2	Bawana S/stn No. 7			7.20	7.20
		0.00	0.00	18.08	18.08
25	Kashmeregate S/stn			5.04	5.04
1	Civil lines			7.20	7.20
2	Town Hall			8.64	8.64
3	Fountain			5.45	5.45
		0.00	0.00	26.33	26.33
26	Pappankalan-II				
1	DMRC				0.00
2	HASTAL			21.60	21.60
3	GGSH			10.80	10.80
4	66KV G-4			21.60	21.60
		0.00	0.00	54.00	54.00
27	Trauma Center (AIIMS)				
1	AIIMS		13.26	5.04	18.30
2	Trauma Center			10.08	10.08
3	Netaji Nagar			15.12	15.12
4	Sanjay Camp			10.08	10.08
5	Kidwai Nagar			10.08	10.08
6	SJ Airport			5.04	5.04
7	Race Course			10.44	10.44
		0.00	13.26	65.88	79.14

SI. No	SUB-STATION	INSTALLED CAPACITY			
		66KV	33KV	11kV	TOTAL
28	MUNDKA				
1	Mangolpuri-I			20.35	20.35
2	Rohini Sec-23	20.00		12.64	32.64
3	66kV Mundka			21.60	21.60
		20.00	0.00	54.59	74.59
29	DSIDC BAWANA				
1	DSIDC NRL-1	0.00			0.00
2	DSIDC NRL-2			16.32	16.32
3	Bawana Clear Water			7.30	7.30
4	Bawana-1			0.00	0.00
		0.00	0.00	23.62	23.62
30	RIDGE VALLEY				
1	Keventry Diary			10.08	10.08
2	Nehru Park			5.04	5.04
3	State Guest House			5.40	5.40
4	Bapu Dham			15.48	15.48
5	66kV Vasant Kunj Inst. Area			21.60	21.60
		0.00	0.00	57.60	57.60
31	IP EXTN (PRAGATI)				
1	Vidyut Bhawan			10.08	10.08
2	Dalhousie Road			5.04	5.04
3	National Archives			10.08	10.08
4	School Lane			10.44	10.44
		0.00	0.00	35.64	35.64
32	Wazirpur				
1	Tri Nagar			10.88	10.88
2	Wazirpur-1			17.18	17.18
3	Wazirpur-2			13.20	13.20
4	Ashok vihar			17.80	17.80
5	Azad Pur			5.44	5.44
6	GTK			4.80	4.80
		0.00	0.00	69.30	69.30
33	Peeragarhi				
1	Rani Bagh			5.44	5.44
2	Rani Bagh cc			9.60	9.60
		0.00	0.00	15.04	15.04
34	Rohini-II				
1	Rohini-6			13.15	13.15
2	Siraspur			7.20	7.20
		0.00	0.00	20.35	20.35

Utility	HT	LT	Total
BYPL	905.23	102.00	1007.23
BRPL	1308.19	242.00	1550.19
TPDDL	830.90	119.00	949.90
NDMC	259.86	24.00	283.86
DTL	753.52	0.00	753.52
IPGCL (RPH)	20.00	0.00	20.00
MES	20.10	0.00	20.10
TOTAL	4097.80	487.00	4584.80

20 DETAILS OF BREAK-DOWNS DURING THE MONTH OF NOVEMBER 2017

SL NO	OCCURRENCE OF BREAK-DOWN		DETAILS OF THE BREAKDOWN	TIME OF RESTORATION		REMARKS
	DATE	TIME		DATE	TIME	
1	3.11.17	00:25	NAJAFGARH 66/11kV, 20MVA Tx-II	3.11.17	09:55	TRIPPED ON 86.
2	3.11.17	13:46	220kV MAHARANI BAGH - PRAGATI CKT	3.11.17	17:53	AT MAHARANI BAGH : DIST PROT, ZONE-I, DIST 0.3KM. AT PRAGATI DIST PROT, ZONE-II, DIST 3.96KM, 86, 186.
3	4.11.17	17:21	GOPALPUR 220/33kV 100MVA Tx-III	4.11.17	21:21	TR. TRIPPED WITH I/C ON 186, R PHSE DIFFERENTIAL.
4	4.11.17	21:14	GOPALPUR 220/33kV 100MVA Tx-III	4.11.17	22:50	TRIPPED ON DIFFERENTIAL.
5	7.11.17	09:27	220kV GOPALPUR-SUBZI MANDI CKT-I	7.11.17	10:03	AT GOPALPUR : DIST PROT, ZONE-I, DIST 0.754KM. AT SUBZI MANDI CKT. DID NOT TRIP.
6	8.11.17	01:45	220kV GOPALPUR- MANDOLACKT-II	8.11.17	05:06	AT GOPALPUR : DIFFERENTIAL TRIP, 86ABC.
7	8.11.17	03:09	220kV BAMNAULI-PAPPANKALAN-II CKT-I	8.11.17	08:26	AT BAMNAULI : DIST PROT, ZONE-I, DIST 14.2KM, E/F. AT PAPANALAN-II : DIST PROT, ZONE-IV, 86.
8	8.11.17	04:40	OKHLA 220/66kV 100MVA Tx-I	8.11.17	15:30	I/C TRIPPED ON O/C, B PHASE.
9	8.11.17	04:48	220kV BAWANA - KANJHAWALA CKT-2	8.11.17	08:30	AT BAWANA : DIST PROT, ZONE-I, DIST 3.74KM, 86. AT KHANJAWALA : DIST PROT, DIST 24.36KM, RYB PHASE.
10	8.11.17	04:48	220kV BAWANA - KANJHAWALA CKT-2	8.11.17	13:44	AT KHANJAWALA : DIST PROT, ZONE-II, DIST 24.36KM. AT BAWANA : CKT. DID NOT TRIPPED.
11	8.11.17	05:01	220kV DSIIDC BAWANA-NARELA CKT-II	8.11.17	17:48	AT NARELA : DIST PROT, ZONE-I, DIST 2.7KM.
12	8.11.17	05:02	220kV WAZIRABAD-GEETA COLONY CKT-II	8.11.17	08:40	AT GEETA COLONY : DIST PROT, ZONE-I, DIST 939MTS. AT WAZIRABAD CKT. DID NOT TRIP.
13	8.11.17	05:07	WAZIRABAD 220/66kV 100MVA Tx-II	8.11.17	11:29	TR. TRIPPED ON E/F.
14	8.11.17	05:20	220kV WAZIRABAD - MANDOLA CKT-I	8.11.17	09:03	AT WAZIRABAD : SUPPLY FAILED+H33 FROM MANDOLA.
15	8.11.17	05:28	220kV GOPALPUR-SUBZI MANDI CKT-I	8.11.17	07:35	AT GOPALPUR : DIST PROT ,ZONE-I, DIST 6.029KM, 86ABC. AT SUBZIMANDI : CKT. DID NOT TRIP.
16	8.11.17	05:37	220kV BAWANA - KANJHAWALA CKT - 1	8.11.17	08:56	AT BAWANA : DIST PROT, ZONE-I, DIST 4.18KM, O/C. AT KHANJAWALA : CKT. DID NOT TRIP.
17	8.11.17	06:05	SARITA VIHAR 220/66kV 100MVA Tx-III	8.11.17	13:50	TRIPPED ON REF.
18	8.11.17	11:24	OKHLA 66/11kV, 20MVA Tx-I	8.11.17	13:05	TR. TRIPPED ON O/C, 86.
19	8.11.17	18:45	220kV MEHRAULI - BTPS CKT. - II	8.11.17	23:15	AT MEHRAULI : DIST PROT, ZONE-I, DIST 9.431KM.
20	9.11.17	01:00	SARITA VIHAR 220/66kV 100MVA Tx-III	9.11.17	15:57	TR. TRIPPED ON 86AB.,
21	10.11.17	08:55	WAZIRABAD 220/66kV 100MVA Tx-II	10.11.17	17:01	TRIPPED ON E/F.
22	11.11.17	10:14	220kV BAWANA-SHALIMARBAGH CKT-II	11.11.17	12:41	AT BAWANA : DIST PROT, ZONE-I, DIST 0.7KM. AT SHALIMARBAGH : CKT. DID NOT TRIP.
23	11.11.17	11:16	LODHI RD 220/33kV 100MVA TR. -III	11.11.17	13:42	TR. TRIPPED ON 86.
24	11.11.17	15:35	OKHLA 66/11kV, 20MVA Tx-I	11.11.17	18:35	TR. TRIPPED ON O/C, 186
25	12.11.17	08:35	GAZIPUR 66/11kV, 20MVA Tx-II	12.11.17	11:20	TR. TRIPPED ON 86.
26	13.11.17	06:46	220kV PRAGATI - PARK STREET CKT-II	13.11.17	06:47	CKT. TRIPPED WHILE CHARGING.
27	16.11.17	02:18	220kV PRAGATI - SARITA VIHAR CKT - I	16.11.17	02:47	AT SARITA VIHAR : DIST PROT, ZONE-I, DIST 480MTS. AT PRAGATI : DIST PROT, ZONE-II, DIST 13.03KM.
28	16.11.17	02:18	220kV MAHARANI BAGH - SARITA VIHAR CKT	16.11.17	02:36	AT MAHARANI BAGH : R PHASE, GEN TRIP, AT SARITA VIHAR : CKT. DID NOT TRIP.
29	16.11.17	02:18	SARITA VIHAR 220/66kV 100MVA Tx-III	16.11.17	14:02	TR. TRIPPED ON REF, 86A&B.
30	16.11.17	02:20	220kV GAZIPUR - NOIDA SEC.-62 CKT	16.11.17	10:05	AT GAZIPUR : B PHASE, E/F, 86A.

SL NO	OCCURRENCE OF BREAK-DOWN		DETAILS OF THE BREAKDOWN	TIME OF RESTORATION		REMARKS
	DATE	TIME		DATE	TIME	
31	16.11.17	08:05	SARITA VIHAR 220/66kV 100MVA Tx-I	16.11.17	09:28	TRIPPED ON 86, 30B.
32	17.11.17	08:39	ROHINI-II 220/66kV 160MVA Tx-II	17.11.17	08:57	I/C TRIPPED ON 86.
33	20.11.17	05:50	VASANT KUNJ 66/11kV, 20MVA Tx-I	20.11.17	10:50	TRIPPED ON OLTC.
34	21.11.17	14:51	220kV ROHINI-SHALIMARBAGH CKT-I	21.11.17	15:23	AT ROHINI : DIST PROT, 186A&B. AT SHALIMARBAGH : DIST PROT.
35	22.11.17	00:03	NARAINA 220/33kV 100MVA Tx-II	22.11.17	17:38	FIRE REPORTED NEAR CONTROL CABLE.
36	22.11.17	16:52	LODHI RD 220/33kV 100MVA TR. -III	22.11.17	17:22	TRIPPED WITHOUT INDICATION.
37	23.11.17	18:04	220kV KANJHAWALA-NAJAFGARH CKT	25.11.17	15:27	AT KHANJAWALA : DIST PROT, ZONE-I.
38	24.11.17	18:18	220kV KANJHAWALA-NAJAFGARH CKT	25.11.17	15:20	AT KHANJAWALA : DIST PROT, ZONE-I, DIST 7.0KM.
39	26.11.17	13:38	220kV GOPALPUR- MANDOLACKT-I	26.11.17	14:25	AT GOPALPUR : DIST PROT, DIST 21.86KM. AT MANDOLA : DIST PROT, DIST 7.5KM.
40	26.11.17	01:13	SARITA VIHAR 220/66kV 100MVA Tx-III	26.11.17	02:15	I/C TRIPPED ON 86.
41	26.11.17	01:31	PARK STREET 220/33kV 100MVA TR. -II	26.11.17	02:10	PROBLEM IN BREAKER.
42	26.11.17	03:57	MASJID MOTH 220/33kV 100MVA TR. - II	26.11.17	10:20	TR. TRIPPED ON E/F, O/C, I/C TRIPPED ON 86
43	26.11.17	07:32	GAZIPUR 220/66kV 100MVA TR. -I	26.11.17	17:05	TR. TRIPPED ON 86, E/F.
44	27.11.17	02:02	220kV MAHARANI BAGH - ELECTRIC LANE CKT-I	27.11.17	03:15	AT ELECTRIC LANE : DIST PROT, TRIP PHASE ABC. AT MAHARANI BAGH : CKT. DID NOT TRIP.
45	28.11.17	06:07	220kV SHALIMAR BAGH - DMRC CKT	28.11.17	14:04	AT SHALIMARBAGH : O/C, RYB PHASE, C PHASE CONDUCTOR DAMAGED.
46	29.11.17	06:07	220KV SHALIMARBAGH-WAZIRPUR CKT-I	29.11.17	09:47	AT WAZIRPUR : DIST PROT, ZONE-II.
47	30.11.17	20:10	TRAUMA CENTER 220/33kV 100MVA Tx-II	30.11.17	22:10	I/C -I TRIPPED ON 86AB.
48	30.11.17	20:10	TRAUMA CENTER 220/33kV 100MVA Tx-I	30.11.17	22:10	I/C -I TRIPPED ON 86AB.

20 DETAILS OF UNDER FREQUENCY RELAY OPERATIONS IN DELHI POWER SYSTEM DURING THE MONTH OF NOVEMBER 2017

DATE	S. N.	TIME		Name of Grid	NAME OF AFFECTED FEEDERS	MODE	LOAD RELIEF IN MW
		OUT	IN				
				NIL			